

## GFP antibody

Cat. No. GTX26673

<b>Host</b>	Goat
<b>Clonality</b>	Polyclonal
<b>Isotype</b>	IgG
<b>Applications</b>	WB, ICC/IF, IHC-P, IHC-Fr, FCM, IP, ELISA, IHC, Multiplexing, Purification, IHC (Free Floating)
<b>Reactivity</b>	Species independent

References ( 41 )

Package

100 µg

## Applications

## Application Note

\*Optimal dilutions/concentrations should be determined by the researcher.

Suggested dilution	Recommended dilution
WB	1:1000-1:10000
ICC/IF	1:500
IHC-P	Assay dependent
IHC-Fr	Assay dependent
FCM	Assay dependent
IP	Assay dependent
ELISA	1:10000-1:30000
IHC	1:200-1:1000
Multiplexing	Assay dependent
Purification	Assay dependent
IHC (Free Floating)	Assay dependent

Not tested in other applications.

**Product Note** Anti-GFP assayed by ELISA for direct binding of antigen recognizes wild type, recombinant and enhanced forms of GFP

## Properties

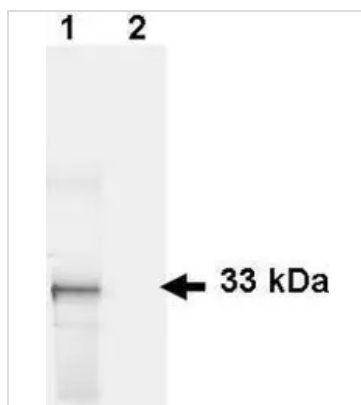
<b>Form</b>	Liquid
<b>Buffer</b>	20mM Potassium Phosphate, 150mM NaCl
<b>Preservative</b>	0.01% Sodium azide
<b>Storage</b>	Store as concentrated solution. Centrifuge briefly prior to opening vial. For short-term storage (1-2 weeks), store at 4°C. For long-term storage, aliquot and store at -20°C or below. Avoid multiple freeze-thaw cycles.



For full product information, images and publications, please visit our [website](#).

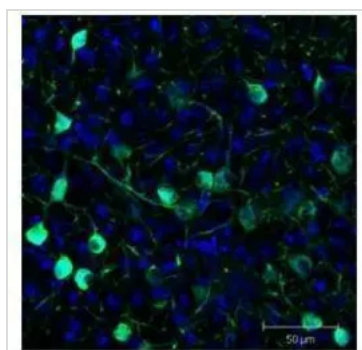
<b>Concentration</b>	1.1 mg/ml (Please refer to the vial label for the specific concentration.)
<b>Immunogen</b>	Recombinant Green Fluorescent Protein (GFP) fusion protein corresponding to the full length amino acid sequence (246aa) derived from the jellyfish <i>Aequorea victoria</i> .
<b>Purification</b>	IgG fraction From polyclonal serum
<b>Conjugation</b>	Unconjugated
<b>Note</b>	For laboratory research use only. Not for any clinical, therapeutic, or diagnostic use in humans or animals. Not for animal or human consumption.  Purchasers shall not, and agree not to enable third parties to, analyze, copy, reverse engineer or otherwise attempt to determine the structure or sequence of the product.

## DATA IMAGES



### GTx26673 WB Image

Figure 1. Western blot of GFP recombinant protein detected with GeneTex polyclonal anti-GFP antibody. Lane 1 shows detection of a 33 kDa band corresponding to a GFP containing recombinant protein (arrowhead) expressed in HeLa cells. Lane 2 shows no staining of a mock transfected HeLa cell lysate. After blocking the membrane was probed with the primary antibody diluted to 1 µg/ml for 1 h at room temperature followed by washes and reaction with a 1:2,500 dilution of donkey anti-Goat IgG [H&L].



### GTx26673 IHC-Fr Image

Sf-1+ neurons and their processes of the ventromedial nucleus of the hypothalamus in *Mus musculus* (coronal view, 20X magnification). GeneTex polyclonal goat anti-GFP was used at 1:500 dilution in free floating immunohistochemistry to detect eGFP. Fluorochrome conjugated anti-goat IgG secondary antibody was used for detection at 1:500. Sections were counterstained with DAPI. Personal Communication, Daniel A. Lee, Johns Hopkins School of Medicine, Baltimore, MD.



For full product information, images and publications, please visit our [website](https://www.genetex.com).