

## Rabbit Anti-Goat IgG antibody

**Cat. No. GTX26697**

<b>Host</b>	Rabbit
<b>Clonality</b>	Polyclonal
<b>Isotype</b>	IgG
<b>Applications</b>	WB, IHC-Fr, ELISA
<b>Reactivity</b>	Goat

**Package**  
1 mg

## Applications

**Application Note**

\*Optimal dilutions/concentrations should be determined by the researcher.

Suggested dilution	Recommended dilution
WB	1:10000-1:60000
IHC-Fr	1:1000-1:5000
ELISA	1:50000-1:100000

Not tested in other applications.

## Properties

<b>Form</b>	Liquid
<b>Buffer</b>	20mM Potassium Phosphate, 150mM NaCl
<b>Preservative</b>	0.01% Sodium azide
<b>Storage</b>	Store as concentrated solution. Centrifuge briefly prior to opening vial. For short-term storage (1-2 weeks), store at 4°C. For long-term storage, aliquot and store at -20°C or below. Avoid multiple freeze-thaw cycles.
<b>Concentration</b>	2.1 mg/ml (Please refer to the vial label for the specific concentration.)
<b>Immunogen</b>	Goat IgG whole molecule
<b>Purification</b>	Purified by antigen-affinity chromatography. From serum
<b>Conjugation</b>	Unconjugated

**Note**

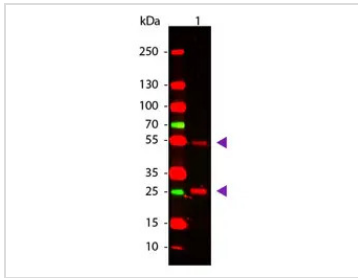
For laboratory research use only. Not for any clinical, therapeutic, or diagnostic use in humans or animals. Not for animal or human consumption.

Purchasers shall not, and agree not to enable third parties to, analyze, copy, reverse engineer or otherwise attempt to determine the structure or sequence of the product.



For full product information, images and publications, please visit our [website](#).

## DATA IMAGES

**GTX26697 WB Image**

WB analysis of goat IgG using GTX26697 Rabbit Anti-Goat IgG antibody.

Loading : 50 ng

Dilution : 1:1000



For full product information, images and publications, please visit our [website](#).