

## Goat Anti-Mouse IgG antibody

**Cat. No. GTX26708**

<b>Host</b>	Goat
<b>Clonality</b>	Polyclonal
<b>Isotype</b>	IgG
<b>Applications</b>	WB, ICC/IF, FCM, IP, ELISA, IHC, Lateral Flow
<b>Reactivity</b>	Mouse

References ( 3 )  
 Package  
 1 mg

## Applications

**Application Note**

\*Optimal dilutions/concentrations should be determined by the researcher.

Suggested dilution	Recommended dilution
WB	1:3000-1:15000
ICC/IF	Assay dependent
FCM	Assay dependent
IP	Assay dependent
ELISA	1:25000
IHC	1:1000-1:5000
Lateral Flow	Assay dependent

Not tested in other applications.

## Properties

<b>Form</b>	Liquid
<b>Buffer</b>	20mM Potassium Phosphate, 150mM NaCl
<b>Preservative</b>	0.01% Sodium azide
<b>Storage</b>	Store as concentrated solution. Centrifuge briefly prior to opening vial. For short-term storage (1-2 weeks), store at 4°C. For long-term storage, aliquot and store at -20°C or below. Avoid multiple freeze-thaw cycles.
<b>Concentration</b>	2.1 mg/ml (Please refer to the vial label for the specific concentration.)
<b>Immunogen</b>	Mouse IgG whole molecule
<b>Purification</b>	Purified by antigen-affinity chromatography. From serum
<b>Conjugation</b>	Unconjugated



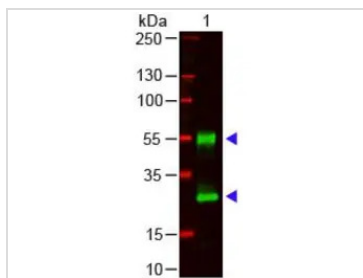
For full product information, images and publications, please visit our [website](#).

For laboratory research use only. Not for any clinical, therapeutic, or diagnostic use in humans or animals. Not for animal or human consumption.

**Note**

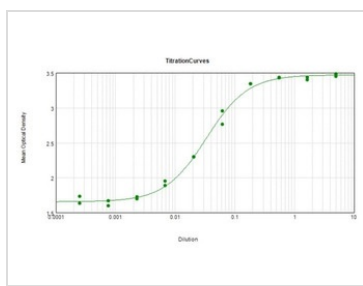
Purchasers shall not, and agree not to enable third parties to, analyze, copy, reverse engineer or otherwise attempt to determine the structure or sequence of the product.

DATA IMAGES



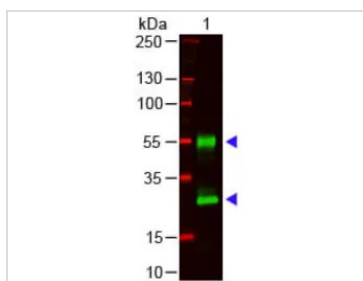
**GTX26708 WB Image**

Western Blot of GTX26708 Sample: Mouse IgG. Load: 100 ng per lane. Primary Antibody: GTX26708 1:1000 overnight at 4°C. Secondary antibody: DyLight™ 800 goat secondary antibody at 1:20,000 for 30 min at RT. Predicted/Observed Size: 28 and 55 kDa for Mouse IgG.



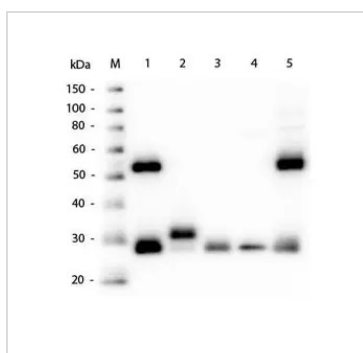
**GTX26708 ELISA Image**

ELISA analysis of mouse IgG using serially diluted GTX26708 Goat Anti-Mouse IgG antibody. Coating : 1 µg



**GTX26708 WB Image**

WB analysis of mouse IgG using GTX26708 Goat Anti-Mouse IgG antibody. Loading : 100 ng Dilution : 1:1000



**GTX26708 WB Image**

WB analysis of various samples using GTX26708 Goat Anti-Mouse IgG antibody.  
 Lane 1 : Mouse IgG  
 Lane 2 : Mouse IgG Fc fragment  
 Lane 3 : Mouse IgG Fab fragment  
 Lane 4 : Mouse kappa  
 Lane 5 : Mouse serum  
 Loading : 50 ng  
 Dilution : 1:1000



For full product information, images and publications, please visit our [website](#).