

## Goat Anti-Rabbit IgG antibody (TxRd)

**Cat. No. GTX26719**

|                     |                                    |
|---------------------|------------------------------------|
| <b>Host</b>         | Goat                               |
| <b>Clonality</b>    | Polyclonal                         |
| <b>Isotype</b>      | IgG                                |
| <b>Applications</b> | WB, ICC/IF, IHC-P, FCM, Dot, ELISA |
| <b>Reactivity</b>   | Rabbit                             |

**Package**  
1 mg

## Applications

**Application Note**

\*Optimal dilutions/concentrations should be determined by the researcher.

| Suggested dilution | Recommended dilution |
|--------------------|----------------------|
| WB                 | Assay dependent      |
| ICC/IF             | 1:1000-1:5000        |
| IHC-P              | Assay dependent      |
| FCM                | 1:500-1:2500         |
| Dot                | Assay dependent      |
| ELISA              | 1:10000-1:50000      |

Not tested in other applications.

## Properties

|                      |  |
|----------------------|--|
| <b>Form</b>          | Liquid   |
| <b>Buffer</b>        | 20mM Potassium Phosphate, 150mM NaCl, 1% BSA   |
| <b>Preservative</b>  | 0.01% Sodium azide   |
| <b>Storage</b>       | Store as concentrated solution. Centrifuge briefly prior to opening vial. For short-term storage (1-2 weeks), store at 4°C. For long-term storage, aliquot and store at -20°C or below. Avoid multiple freeze-thaw cycles. Protect from light. |
| <b>Concentration</b> | 2 mg/ml (Please refer to the vial label for the specific concentration.)   |
| <b>Immunogen</b>     | Rabbit IgG whole molecule  |
| <b>Purification</b>  | Purified by antigen-affinity chromatography.<br>From serum   |
| <b>Conjugation</b>   | Texas Red (TxRd) <a href="#">Wavelength</a>  |

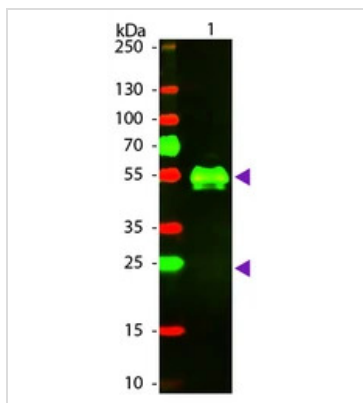


For full product information, images and publications, please visit our [website](#).

For laboratory research use only. Not for any clinical, therapeutic, or diagnostic use in humans or animals. Not for animal or human consumption.

**Note**  
 Purchasers shall not, and agree not to enable third parties to, analyze, copy, reverse engineer or otherwise attempt to determine the structure or sequence of the product.

## DATA IMAGES

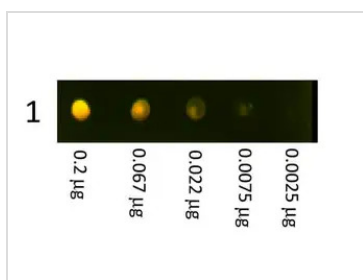


### GTX26719 WB Image

WB analysis of rabbit IgG using GTX26719 Goat Anti-Rabbit IgG antibody (TxRd).

Loading : 50 ng

Dilution : 1:1000



### GTX26719 Dot Image

Dot blot analysis of rabbit IgG using GTX26719 Goat Anti-Rabbit IgG antibody (TxRd).

Dilution : 1:1000



For full product information, images and publications, please visit our [website](#).