

Goat Anti-Rabbit IgG antibody (HRP)

Cat. No. GTX26721

Host	Goat
Clonality	Polyclonal
Isotype	IgG
Applications	WB, ELISA, IHC
Reactivity	Rabbit

References (8)

Package

1 mg

Applications

Application Note

*Optimal dilutions/concentrations should be determined by the researcher.

Suggested dilution	Recommended dilution
WB	1:10000-1:20000
ELISA	1:150000-1:250000
IHC	1:500-1:2500

Not tested in other applications.

Properties

Form	Liquid
Buffer	20mM Potassium Phosphate, 150mM NaCl, 1% BSA
Preservative	0.01% Gentamicin Sulfate
Storage	Store as concentrated solution. Centrifuge briefly prior to opening vial. For short-term storage (1-2 weeks), store at 4°C. For long-term storage, aliquot and store at -20°C or below. Avoid multiple freeze-thaw cycles.
Concentration	2 mg/ml (Please refer to the vial label for the specific concentration.)
Immunogen	Rabbit IgG whole molecule
Purification	Purified by antigen-affinity chromatography. From serum
Conjugation	Horseradish peroxidase(HRP)

Note

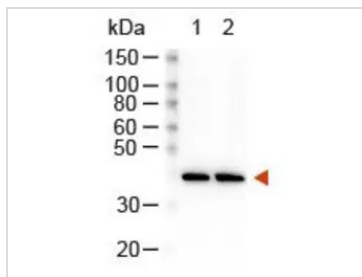
For laboratory research use only. Not for any clinical, therapeutic, or diagnostic use in humans or animals. Not for animal or human consumption.

Purchasers shall not, and agree not to enable third parties to, analyze, copy, reverse engineer or otherwise attempt to determine the structure or sequence of the product.



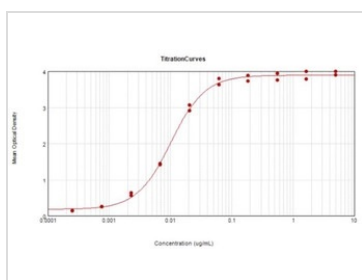
For full product information, images and publications, please visit our [website](#).

DATA IMAGES



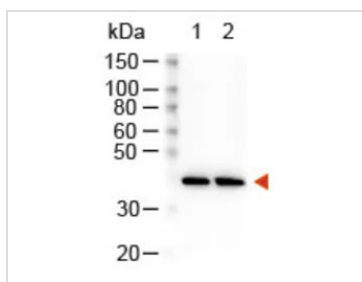
GTX26721 WB Image

Western Blot of GTX26721 Lane 1: HeLa Whole Cell Lysate. Lane 2: NIH/3T3 Whole Cell Lysate. Load: 10 μ g per lane. Primary antibody: Beta Actin Antibody at 1:1000 for overnight at 4°C. Secondary antibody: GTX26721 at 1:40,000 for 30 min at RT. Predicted/Observed size: 42 kDa.



GTX26721 ELISA Image

ELISA analysis of rabbit IgG using serially diluted GTX26721 Goat Anti-Rabbit IgG antibody (HRP). Coating : 10 μ g



GTX26721 WB Image

WB analysis of various whole cell lysates using beta actin antibody followed by GTX26721 Goat Anti-Rabbit IgG antibody (HRP)
Lane 1 : HeLa whole cell lysate
Lane 2 : NIH-3T3 whole cell lysate
Loading : 10 μ g
Dilution : 1:40000



For full product information, images and publications, please visit our [website](https://www.genetex.com).