

## Rabbit Anti-Mouse IgG antibody (HRP)

Cat. No. GTX26728

Host	Rabbit
Clonality	Polyclonal
Isotype	IgG
Applications	WB, ICC/IF, ELISA, IHC
Reactivity	Mouse

References ( 8 )

Package

1 mg

## Applications

## Application Note

\*Optimal dilutions/concentrations should be determined by the researcher.

Suggested dilution	Recommended dilution
WB	1:10000-1:30000
ICC/IF	Assay dependent
ELISA	1:50000-1:300000
IHC	1:500-1:2500

Not tested in other applications.

## Properties

Form	Liquid
Buffer	20mM Potassium Phosphate, 150mM NaCl, 1% BSA
Preservative	0.01% Gentamicin Sulfate
Storage	Store as concentrated solution. Centrifuge briefly prior to opening vial. For short-term storage (1-2 weeks), store at 4°C. For long-term storage, aliquot and store at -20°C or below. Avoid multiple freeze-thaw cycles.
Concentration	2 mg/ml (Please refer to the vial label for the specific concentration.)
Immunogen	Mouse IgG whole molecule
Purification	Purified by antigen-affinity chromatography. From serum
Conjugation	Horseradish peroxidase(HRP)

## Note

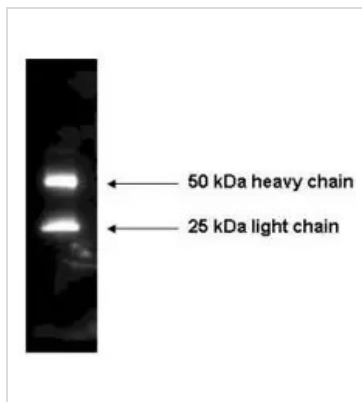
For laboratory research use only. Not for any clinical, therapeutic, or diagnostic use in humans or animals. Not for animal or human consumption.

Purchasers shall not, and agree not to enable third parties to, analyze, copy, reverse engineer or otherwise attempt to determine the structure or sequence of the product.



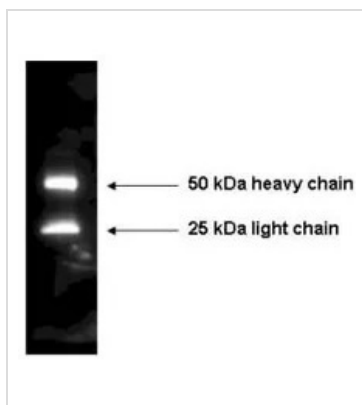
For full product information, images and publications, please visit our [website](#).

## DATA IMAGES



### GTX26728 WB Image

Western Blot of GTX26728 . Mouse IgG (GTX26728, 1.0 mg) was detected by GTX26728 with 1:2,500 for 45 min at RT.



### GTX26728 WB Image

WB analysis of mouse IgG using GTX26728 Rabbit Anti-Mouse IgG antibody (HRP).

Loading : 1 mg

Dilution : 1:2500



### GTX26728 WB Image

WB analysis of various samples using anti-GFP antibody followed by GTX26728 Rabbit Anti-Mouse IgG antibody (HRP).

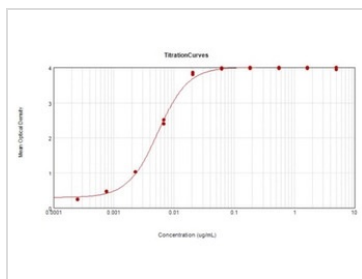
Lane 1 : Protein ladder

Lane 2 : 100 ng of GFP

Lane 3 : 66 ng of GFP

Lane 4 : 33 ng of GFP

Lane 5 : Mock



### GTX26728 ELISA Image

ELISA analysis of mouse IgG using serially diluted GTX26728 Rabbit Anti-Mouse IgG antibody (HRP).

Coating : 10 µg



For full product information, images and publications, please visit our [website](https://www.genetex.com).