

Rabbit Anti-Pig IgG antibody (Biotin)

Cat. No. GTX26776

| | |
|--------------|----------------|
| Host | Rabbit |
| Clonality | Polyclonal |
| Isotype | IgG |
| Applications | WB, ELISA, IHC |
| Reactivity | Pig |

Package
1 mg

Applications

Application Note

*Optimal dilutions/concentrations should be determined by the researcher.

| Suggested dilution | Recommended dilution |
|--------------------|----------------------|
| WB | 1:2000-1:10000 |
| ELISA | 1:20000-1:100000 |
| IHC | 1:1000-1:5000 |

Not tested in other applications.

Properties

| | |
|---------------|--|
| Form | Liquid |
| Buffer | 20mM Potassium Phosphate, 150mM NaCl, 1% BSA |
| Preservative | 0.01% Sodium azide |
| Storage | Store as concentrated solution. Centrifuge briefly prior to opening vial. For short-term storage (1-2 weeks), store at 4°C. For long-term storage, aliquot and store at -20°C or below. Avoid multiple freeze-thaw cycles. |
| Concentration | 2 mg/ml (Please refer to the vial label for the specific concentration.) |
| Immunogen | Pig IgG whole molecule |
| Purification | IgG fraction This product was prepared from monospecific antiserum by immunoaffinity chromatography using Swine IgG coupled to agarose beads followed by solid phase adsorptions to remove any unwanted reactivities. |
| Conjugation | Biotin |

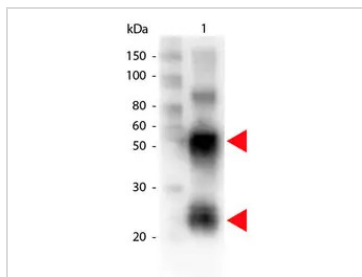
Note

For laboratory research use only. Not for any clinical, therapeutic, or diagnostic use in humans or animals. Not for animal or human consumption.

Purchasers shall not, and agree not to enable third parties to, analyze, copy, reverse engineer or otherwise attempt to determine the structure or sequence of the product.



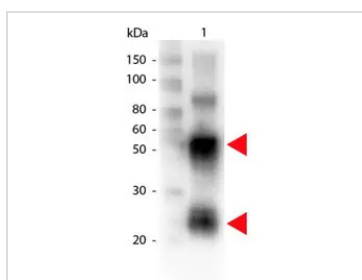
For full product information, images and publications, please visit our [website](#).

DATA IMAGES

GTX26776 WB Image

WB analysis of pig IgG using GTX26776 Rabbit Anti-Pig IgG antibody (Biotin).

Loading : 100 ng

Dilution : 1:1000


GTX26776 WB Image

Western Blot of GTX26776 Sample: Swine IgG. Load: 100 ng per lane. Primary antibody: GTX26776 at 1:1,000 for overnight at 4°C. Secondary antibody: HRP Streptavidin secondary antibody at 1:40,000 for 30 min at RT. Predicted/Observed size: 55 and 28 kDa for Swine IgG.



For full product information, images and publications, please visit our [website](https://www.genetex.com).