

## Rabbit Anti-Pig IgG antibody (AP)

**Cat. No. GTX26778**

<b>Host</b>	Rabbit
<b>Clonality</b>	Polyclonal
<b>Isotype</b>	IgG
<b>Applications</b>	WB, Dot, ELISA, IHC
<b>Reactivity</b>	Pig

**Package**  
1 mg

## Applications

**Application Note**

\*Optimal dilutions/concentrations should be determined by the researcher.

Suggested dilution	Recommended dilution
WB	1:500-1:2500
Dot	Assay dependent
ELISA	1:14000
IHC	1:200-1:1000

Not tested in other applications.

## Properties

<b>Form</b>	Liquid
<b>Buffer</b>	50mM Tris-HCl, 150mM NaCl, 1mM MgCl <sub>2</sub> , 0.1mM ZnCl <sub>2</sub> , 1% BSA, 50% Glycerol
<b>Preservative</b>	0.01% Sodium azide
<b>Storage</b>	Store as concentrated solution. Centrifuge briefly prior to opening vial. Store at 4°C. DO NOT FREEZE.
<b>Concentration</b>	1 mg/ml (Please refer to the vial label for the specific concentration.)
<b>Immunogen</b>	Pig IgG whole molecule
<b>Purification</b>	IgG fraction This product was prepared from monospecific antiserum by immunoaffinity chromatography using Swine IgG coupled to agarose beads followed by solid phase adsorptions to remove any unwanted reactivities.
<b>Conjugation</b>	Alkaline Phosphatase (AP)

**Note**

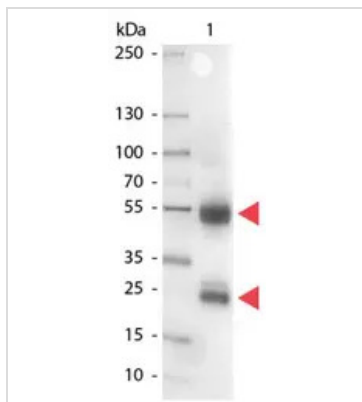
For laboratory research use only. Not for any clinical, therapeutic, or diagnostic use in humans or animals. Not for animal or human consumption.

Purchasers shall not, and agree not to enable third parties to, analyze, copy, reverse engineer or otherwise attempt to determine the structure or sequence of the product.

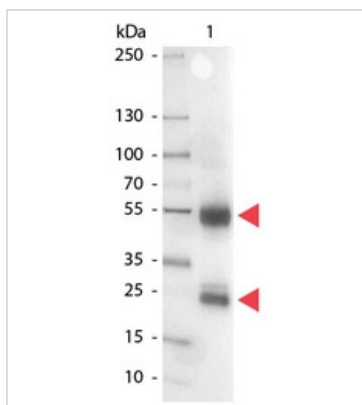


For full product information, images and publications, please visit our [website](#).

## DATA IMAGES

**GTX26778 WB Image**

Western Blot of GTX26778 Sample: Swine IgG. Load: 100 ng per lane. Primary antibody: none. Secondary antibody: Alkaline Phosphatase swine secondary antibody at 1:1,000 for 60 min at RT. Predicted/Observed size: 55 kDa, 28 kDa for Swine IgG.

**GTX26778 WB Image**

WB analysis of pig IgG using GTX26778 Rabbit Anti-Pig IgG antibody (AP).  
Loading : 100 ng  
Dilution : 1:1000



For full product information, images and publications, please visit our [website](#).