

Goat Anti-Mouse IgG antibody (HRP)

Cat. No. GTX26789

Host	Goat
Clonality	Polyclonal
Isotype	IgG
Applications	WB, ELISA, IHC
Reactivity	Mouse

References (4)
 Package
 1 mg

Applications

Application Note

*Optimal dilutions/concentrations should be determined by the researcher.

Suggested dilution	Recommended dilution
WB	1:2000-1:10000
ELISA	1:50000-1:100000
IHC	1:500-1:2500

Not tested in other applications.

Properties

Form	Liquid
Buffer	20mM Potassium Phosphate, 150mM NaCl, 1% BSA
Preservative	0.01% Gentamicin Sulfate
Storage	Store as concentrated solution. Centrifuge briefly prior to opening vial. For short-term storage (1-2 weeks), store at 4°C. For long-term storage, aliquot and store at -20°C or below. Avoid multiple freeze-thaw cycles.
Concentration	2 mg/ml (Please refer to the vial label for the specific concentration.)
Immunogen	Mouse IgG whole molecule
Purification	IgG fraction The product was prepared from monospecific antiserum by immunoaffinity chromatography using Mouse IgG coupled to agarose beads followed by solid phase adsorptions to remove any unwanted reactivities.
Conjugation	Horseradish peroxidase(HRP)

Note

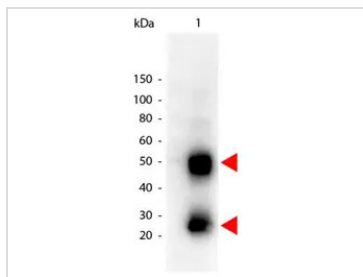
For laboratory research use only. Not for any clinical, therapeutic, or diagnostic use in humans or animals. Not for animal or human consumption.

Purchasers shall not, and agree not to enable third parties to, analyze, copy, reverse engineer or otherwise attempt to determine the structure or sequence of the product.



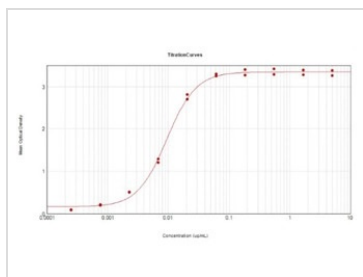
For full product information, images and publications, please visit our [website](#).

DATA IMAGES



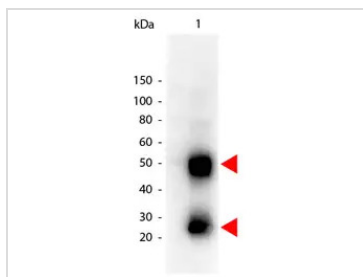
GTX26789 WB Image

Western Blot of GTX26789 Sample: Mouse IgG. Load: 50 ng per lane. Primary antibody: none. Secondary antibody: GTX26789 at 1:1,000 for 60 min at RT. Predicted/Observed size: 50 kDa, 25 kDa for Mouse IgG.



GTX26789 ELISA Image

ELISA analysis of mouse IgG using serially diluted GTX26789 Goat Anti-Mouse IgG antibody (HRP).
Coating : 10 µg



GTX26789 WB Image

WB analysis of mouse IgG using GTX26789 Goat Anti-Mouse IgG antibody (HRP).
Loading : 50 ng
Dilution : 1:1000



For full product information, images and publications, please visit our [website](#).