

## Goat Anti-Mouse IgG antibody (AP)

Cat. No. GTX26790

Host	Goat
Clonality	Polyclonal
Isotype	IgG
Applications	WB, ICC/IF, Dot, ELISA, IHC, Lateral Flow
Reactivity	Mouse

**Package**  
1 mg

## Applications

## Application Note

\*Optimal dilutions/concentrations should be determined by the researcher.

Suggested dilution	Recommended dilution
WB	1:1000-1:4000
ICC/IF	Assay dependent
Dot	Assay dependent
ELISA	1:15000
IHC	1:200-1:1000
Lateral Flow	Assay dependent

Not tested in other applications.

## Properties

Form	Liquid
Buffer	50mM Tris-HCl, 150mM NaCl, 1mM MgCl <sub>2</sub> , 0.1mM ZnCl <sub>2</sub> , 1% BSA, 50% Glycerol
Preservative	0.1% Sodium azide
Storage	Store as concentrated solution. Centrifuge briefly prior to opening vial. Store at 4°C. DO NOT FREEZE.
Concentration	1 mg/ml (Please refer to the vial label for the specific concentration.)
Immunogen	Mouse IgG whole molecule
Purification	IgG fraction This product was prepared from monospecific antiserum by immunoaffinity chromatography using Mouse IgG coupled to agarose beads followed by solid phase adsorptions to remove any unwanted reactivities.
Conjugation	Alkaline Phosphatase (AP)



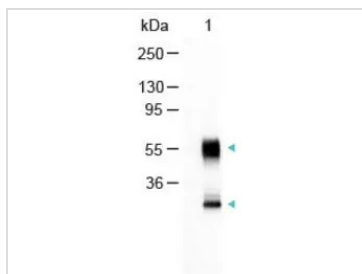
For full product information, images and publications, please visit our [website](#).

For laboratory research use only. Not for any clinical, therapeutic, or diagnostic use in humans or animals. Not for animal or human consumption.

## Note

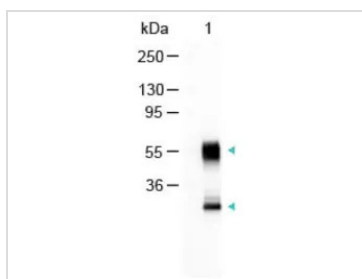
Purchasers shall not, and agree not to enable third parties to, analyze, copy, reverse engineer or otherwise attempt to determine the structure or sequence of the product.

## DATA IMAGES



### GTX26790 WB Image

Western Blot of GTX26790 Sample: Mouse IgG Load: 100 ng per lane Secondary antibody: GTX26790 at 1:1000 for 60 min at RT Predicted/Observed size: 55 and 28 kDa.



### GTX26790 WB Image

WB analysis of mouse IgG using GTX26790 Goat Anti-Mouse IgG antibody (AP).

Loading : 100 ng

Dilution : 1:1000



For full product information, images and publications, please visit our [website](https://www.genetex.com).