

Sheep Anti-Rabbit IgG antibody

Cat. No. GTX26797

Host	Sheep
Clonality	Polyclonal
Isotype	IgG
Applications	WB, ELISA, IHC
Reactivity	Rabbit

Package
1 mg

Applications

Application Note

*Optimal dilutions/concentrations should be determined by the researcher.

Suggested dilution	Recommended dilution
WB	1:4000-1:20000
ELISA	1:40000-1:200000
IHC	1:2000-1:10000

Not tested in other applications.

Properties

Form	Liquid
Buffer	20mM Potassium Phosphate, 150mM NaCl
Preservative	0.01% Sodium azide
Storage	Store as concentrated solution. Centrifuge briefly prior to opening vial. For short-term storage (1-2 weeks), store at 4°C. For long-term storage, aliquot and store at -20°C or below. Avoid multiple freeze-thaw cycles.
Concentration	2.1 mg/ml (Please refer to the vial label for the specific concentration.)
Immunogen	Rabbit IgG whole molecule
Purification	IgG fraction This product was prepared from monospecific antiserum by immunoaffinity chromatography using Rabbit IgG coupled to agarose beads followed by solid phase adsorptions to remove any unwanted reactivities.
Conjugation	Unconjugated

Note

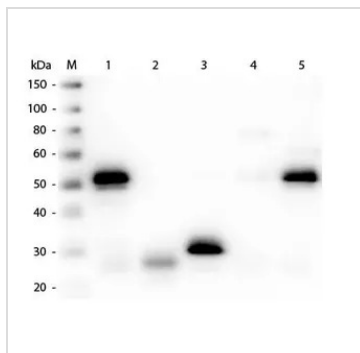
For laboratory research use only. Not for any clinical, therapeutic, or diagnostic use in humans or animals. Not for animal or human consumption.

Purchasers shall not, and agree not to enable third parties to, analyze, copy, reverse engineer or otherwise attempt to determine the structure or sequence of the product.



For full product information, images and publications, please visit our [website](#).

DATA IMAGES



GTX26797 WB Image

WB analysis of various samples using GTX26797 Sheep Anti-Rabbit IgG antibody.

Lane 1 : Rabbit IgG

Lane 2 : Rabbit IgG Fab

Lane 3 : Rabbit IgG Fc

Lane 4 : Rabbit IgM

Lane 5 : Normal rabbit serum

Loading : 50 ng

Dilution : 1:3000



For full product information, images and publications, please visit our [website](https://www.genetex.com).