

Donkey Anti-Rabbit IgG antibody (HRP)

Cat. No. GTX26802

Host	Donkey
Clonality	Polyclonal
Isotype	IgG
Applications	WB, ELISA, IHC
Reactivity	Rabbit

References (2)

Package

1 mg

Applications

Application Note

*Optimal dilutions/concentrations should be determined by the researcher.

Suggested dilution	Recommended dilution
WB	1:1000-1:3000
ELISA	1:40000
IHC	1:500-1:2000

Not tested in other applications.

Properties

Form	Liquid
Buffer	20mM Potassium Phosphate, 150mM NaCl, 1% BSA
Preservative	0.01% Gentamicin Sulfate
Storage	Store as concentrated solution. Centrifuge briefly prior to opening vial. For short-term storage (1-2 weeks), store at 4°C. For long-term storage, aliquot and store at -20°C or below. Avoid multiple freeze-thaw cycles.
Concentration	2 mg/ml (Please refer to the vial label for the specific concentration.)
Immunogen	Rabbit IgG whole molecule
Purification	Purified by antigen-affinity chromatography. From serum
Conjugation	Horseradish peroxidase(HRP)

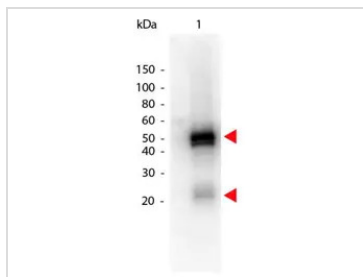
Note

For laboratory research use only. Not for any clinical, therapeutic, or diagnostic use in humans or animals. Not for animal or human consumption.

Purchasers shall not, and agree not to enable third parties to, analyze, copy, reverse engineer or otherwise attempt to determine the structure or sequence of the product.

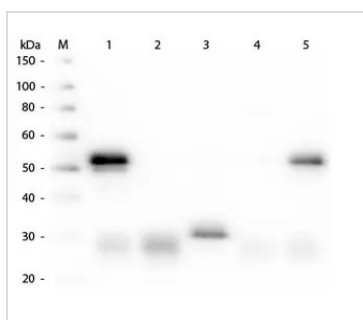
For full product information, images and publications, please visit our [website](#).

DATA IMAGES



GTX26802 WB Image

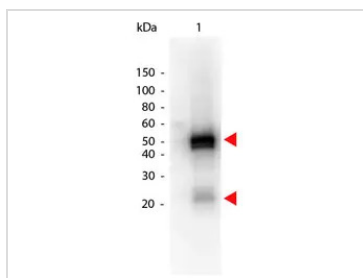
Western Blot of GTX26802 Sample: Rabbit IgG. Load: 50 ng per lane. Primary antibody: none. Secondary antibody: Peroxidase donkey secondary antibody at 1:1,000 for 60 min at RT. Predicted/Observed size: 55 kDa, 28 kDa for Rabbit IgG.



GTX26802 WB Image

WB analysis of various samples using GTX26802 Donkey Anti-Rabbit IgG antibody (HRP).

- Lane 1 : Rabbit IgG
 - Lane 2 : Rabbit IgG Fab
 - Lane 3 : Rabbit IgG Fc
 - Lane 4 : Rabbit IgM
 - Lane 5 : Normal rabbit serum
- Dilution : 1:5000



GTX26802 WB Image

WB analysis of rabbit IgG using GTX26802 Donkey Anti-Rabbit IgG antibody (HRP).

- Loading : 50 ng
- Dilution : 1:1000



For full product information, images and publications, please visit our [website](#).