

## Sheep Anti-Mouse IgG antibody (HRP)

Cat. No. GTX26808

<b>Host</b>	Sheep
<b>Clonality</b>	Polyclonal
<b>Isotype</b>	IgG
<b>Applications</b>	WB, ELISA, IHC
<b>Reactivity</b>	Mouse

References ( 1 )  
 Package  
 1 mg

## Applications

## Application Note

\*Optimal dilutions/concentrations should be determined by the researcher.

Suggested dilution	Recommended dilution
WB	1:1000-1:5000
ELISA	1:100000-1:200000
IHC	1:500-1:2500

Not tested in other applications.

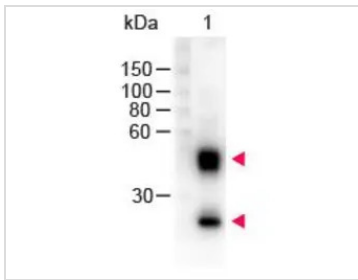
## Properties

<b>Form</b>	Liquid
<b>Buffer</b>	20mM Potassium Phosphate, 150mM NaCl, 1% BSA
<b>Preservative</b>	0.01% Gentamicin Sulfate
<b>Storage</b>	Store as concentrated solution. Centrifuge briefly prior to opening vial. For short-term storage (1-2 weeks), store at 4°C. For long-term storage, aliquot and store at -20°C or below. Avoid multiple freeze-thaw cycles.
<b>Concentration</b>	2 mg/ml (Please refer to the vial label for the specific concentration.)
<b>Immunogen</b>	Mouse IgG whole molecule
<b>Purification</b>	IgG fraction This product was prepared from monospecific antiserum by immunoaffinity chromatography using Mouse IgG coupled to agarose beads followed by solid phase adsorptions to remove any unwanted reactivities.
<b>Conjugation</b>	Horseradish peroxidase(HRP)
<b>Note</b>	For laboratory research use only. Not for any clinical, therapeutic, or diagnostic use in humans or animals. Not for animal or human consumption.  Purchasers shall not, and agree not to enable third parties to, analyze, copy, reverse engineer or otherwise attempt to determine the structure or sequence of the product.

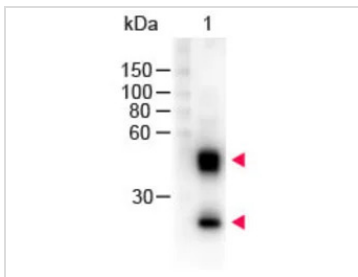


For full product information, images and publications, please visit our [website](#).

## DATA IMAGES

**GTX26808 WB Image**

Western Blot of GTX26808 Sample: Mouse IgG. Load: 100 ng per lane. Primary antibody: none. Secondary antibody: GTX26808 at 1:1,000 for 60 min at RT. Predicted/Observed size: 55 and 28 kDa for Mouse IgG.

**GTX26808 WB Image**

WB analysis of mouse IgG using GTX26808 Sheep Anti-Mouse IgG antibody (HRP).  
Loading : 100 ng  
Dilution : 1:1000



For full product information, images and publications, please visit our [website](#).