

Sheep Anti-Mouse IgG antibody (AP)

Cat. No. GTX26809

Host	Sheep
Clonality	Polyclonal
Isotype	IgG
Applications	WB, Dot, ELISA, IHC
Reactivity	Mouse

Package
1 mg

Applications

Application Note

*Optimal dilutions/concentrations should be determined by the researcher.

Suggested dilution	Recommended dilution
WB	1:500-1:2500
Dot	Assay dependent
ELISA	1:10000-1:50000
IHC	1:200-1:1000

Not tested in other applications.

Properties

Form	Liquid
Buffer	50mM Tris-HCl, 150mM NaCl, 1mM MgCl ₂ , 0.1mM ZnCl ₂ , 1% BSA, 50% Glycerol
Preservative	0.01% Sodium azide
Storage	Store as concentrated solution. Centrifuge briefly prior to opening vial. Store at 4°C. DO NOT FREEZE.
Concentration	1 mg/ml (Please refer to the vial label for the specific concentration.)
Immunogen	Mouse IgG whole molecule
Purification	IgG fraction This product was prepared from monospecific antiserum by immunoaffinity chromatography using Mouse IgG coupled to agarose beads followed by solid phase adsorptions to remove any unwanted reactivities.
Conjugation	Alkaline Phosphatase (AP)

Note

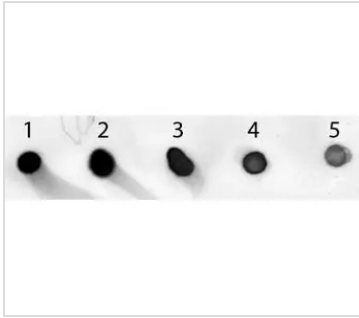
For laboratory research use only. Not for any clinical, therapeutic, or diagnostic use in humans or animals. Not for animal or human consumption.

Purchasers shall not, and agree not to enable third parties to, analyze, copy, reverse engineer or otherwise attempt to determine the structure or sequence of the product.



For full product information, images and publications, please visit our [website](#).

DATA IMAGES

**GTX26809 Dot Image**

Dot blot analysis of mouse IgG using GTX26809 Sheep Anti-Mouse IgG antibody (AP).

Lane 1 : 200 ng

Lane 2 : 66.67 ng

Lane 3 : 22.22 ng

Lane 4 : 7.41 ng

Lane 5 : 2.47 ng

Dilution : 1:1000



For full product information, images and publications, please visit our [website](#).