

## Donkey Anti-Mouse IgG antibody (FITC)

Cat. No. GTX26816

Host	Donkey
Clonality	Polyclonal
Isotype	IgG
Applications	WB, ICC/IF, FCM, Dot
Reactivity	Mouse

References ( 8 )

Package

1 mg

## Applications

## Application Note

\*Optimal dilutions/concentrations should be determined by the researcher.

Suggested dilution	Recommended dilution
WB	Assay dependent
ICC/IF	1:500-1:2500
FCM	Assay dependent
Dot	Assay dependent

Not tested in other applications.

## Properties

Form	Liquid
Buffer	20mM Potassium Phosphate, 150mM NaCl, 1% BSA
Preservative	0.01% Sodium azide
Storage	Store as concentrated solution. Centrifuge briefly prior to opening vial. For short-term storage (1-2 weeks), store at 4°C. For long-term storage, aliquot and store at -20°C or below. Avoid multiple freeze-thaw cycles. Protect from light.
Concentration	2 mg/ml (Please refer to the vial label for the specific concentration.)
Immunogen	Mouse IgG whole molecule
Purification	IgG fraction This product was prepared from monospecific antiserum by immunoaffinity chromatography using Mouse IgG coupled to agarose beads followed by solid phase adsorption(s) to remove any unwanted reactivities.
Conjugation	Fluorescein isothiocyanate (FITC) <a href="#">Wavelength</a>

## Note

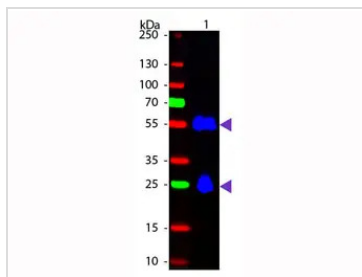
For laboratory research use only. Not for any clinical, therapeutic, or diagnostic use in humans or animals. Not for animal or human consumption.

Purchasers shall not, and agree not to enable third parties to, analyze, copy, reverse engineer or otherwise attempt to determine the structure or sequence of the product.



For full product information, images and publications, please visit our [website](#).

## DATA IMAGES



### GTx26816 WB Image

WB analysis of mouse IgG using GTx26816 Donkey Anti-Mouse IgG antibody (FITC).

Loading : 50 ng

Dilution : 1:1000



For full product information, images and publications, please visit our [website](#).