

Donkey Anti-Mouse IgG antibody (HRP)

Cat. No. GTX26820

Host	Donkey
Clonality	Polyclonal
Isotype	IgG
Applications	WB, IHC-Fr, ELISA
Reactivity	Mouse

References (1)
 Package
 1 mg

Applications

Application Note

*Optimal dilutions/concentrations should be determined by the researcher.

Suggested dilution	Recommended dilution
WB	1:2000-1:10000
IHC-Fr	1:500-1:2500
ELISA	1:70000

Not tested in other applications.

Properties

Form	Liquid
Buffer	20mM Potassium Phosphate, 150mM NaCl, 1% BSA
Preservative	0.01% Gentamicin Sulfate
Storage	Store as concentrated solution. Centrifuge briefly prior to opening vial. For short-term storage (1-2 weeks), store at 4°C. For long-term storage, aliquot and store at -20°C or below. Avoid multiple freeze-thaw cycles.
Concentration	2 mg/ml (Please refer to the vial label for the specific concentration.)
Immunogen	Mouse IgG whole molecule
Purification	Purified by antigen-affinity chromatography. From serum
Conjugation	Horseradish peroxidase(HRP)

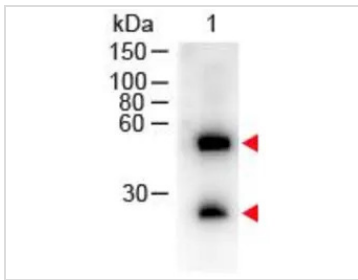
Note

For laboratory research use only. Not for any clinical, therapeutic, or diagnostic use in humans or animals. Not for animal or human consumption.

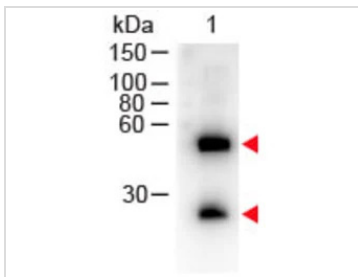
Purchasers shall not, and agree not to enable third parties to, analyze, copy, reverse engineer or otherwise attempt to determine the structure or sequence of the product.



For full product information, images and publications, please visit our [website](#).

DATA IMAGES

GTX26820 WB Image

Western Blot of GTX26820 Sample: Mouse IgG. Load: 50 ng per lane. Primary Antibody: None. Secondary antibody: GTX26820 at 1:1,000 for 60 min at RT. Predicted/Observed size: 55 and 28 kDa for Mouse IgG.


GTX26820 WB Image

WB analysis of mouse IgG using GTX26820 Donkey Anti-Mouse IgG antibody (HRP).
 Loading : 50 ng
 Dilution : 1:1000



For full product information, images and publications, please visit our [website](#).