

## Goat Anti-Rabbit IgG antibody, Fab fragment

Cat. No. GTX26824

Host	Goat
Clonality	Polyclonal
Isotype	IgG Fab
Applications	WB, ICC/IF, Dot, ELISA, IHC
Reactivity	Rabbit

**Package**  
1 mg

## Applications

## Application Note

\*Optimal dilutions/concentrations should be determined by the researcher.

Suggested dilution	Recommended dilution
WB	1:2000-1:10000
ICC/IF	Assay dependent
Dot	Assay dependent
ELISA	1:4000-1:20000
IHC	1:1000-1:5000

Not tested in other applications.

## Properties

Form	Liquid
Buffer	20mM Potassium Phosphate, 150mM NaCl
Preservative	0.01% Sodium azide
Storage	Store as concentrated solution. Centrifuge briefly prior to opening vial. Store at 4°C.
Concentration	1 mg/ml (Please refer to the vial label for the specific concentration.)
Immunogen	Rabbit IgG whole molecule
Purification	IgG fraction This product was prepared from monospecific antiserum by immunoaffinity chromatography using Rabbit IgG coupled to agarose beads followed by solid phase adsorptions to remove any unwanted reactivities, papain digestion and chromatographic separation.
Conjugation	Unconjugated

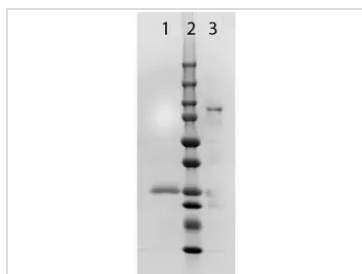


For full product information, images and publications, please visit our [website](#).

For laboratory research use only. Not for any clinical, therapeutic, or diagnostic use in humans or animals. Not for animal or human consumption.

**Note**

Purchasers shall not, and agree not to enable third parties to, analyze, copy, reverse engineer or otherwise attempt to determine the structure or sequence of the product.

**DATA IMAGES**

**GTX26824 Image**

SDS-PAGE analysis of GTX26824 Goat Anti-Rabbit IgG antibody, Fab fragment.

Lane 1 : Reduced GTX26824

Lane 2 : Protein ladder

Lane 3 : Non-reduced GTX26824



For full product information, images and publications, please visit our [website](https://www.genetex.com).