

## Chicken Anti-Rabbit IgG antibody (TxRd)

**Cat. No. GTX26827**

<b>Host</b>	Chicken
<b>Clonality</b>	Polyclonal
<b>Isotype</b>	IgY
<b>Applications</b>	WB, ICC/IF, FCM, Dot, ELISA
<b>Reactivity</b>	Rabbit

Package

1 mg

## Applications

**Application Note**

\*Optimal dilutions/concentrations should be determined by the researcher.

Suggested dilution	Recommended dilution
WB	Assay dependent
ICC/IF	1:1000-1:5000
FCM	1:500-1:2500
Dot	Assay dependent
ELISA	1:10000-1:50000

Not tested in other applications.

## Properties

<b>Form</b>	Liquid
<b>Buffer</b>	20mM Potassium Phosphate, 150mM NaCl, 1% BSA
<b>Preservative</b>	0.01% Sodium azide
<b>Storage</b>	Store as concentrated solution. Centrifuge briefly prior to opening vial. For short-term storage (1-2 weeks), store at 4°C. For long-term storage, aliquot and store at -20°C or below. Avoid multiple freeze-thaw cycles. Protect from light.
<b>Concentration</b>	1 mg/ml (Please refer to the vial label for the specific concentration.)
<b>Immunogen</b>	Rabbit IgG whole molecule
<b>Purification</b>	IgG fraction This product was prepared from monospecific antiserum by immunoaffinity chromatography using Rabbit IgG coupled to agarose beads followed by solid phase adsorptions to remove any unwanted reactivities.
<b>Conjugation</b>	Texas Red (TxRd) <a href="#">Wavelength</a>



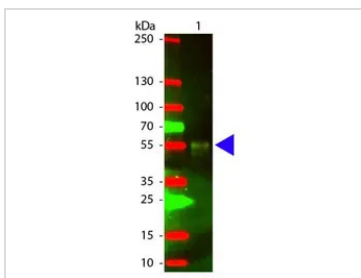
For full product information, images and publications, please visit our [website](#).

For laboratory research use only. Not for any clinical, therapeutic, or diagnostic use in humans or animals. Not for animal or human consumption.

**Note**

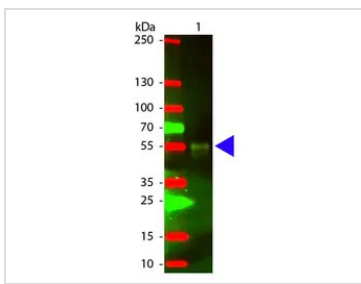
Purchasers shall not, and agree not to enable third parties to, analyze, copy, reverse engineer or otherwise attempt to determine the structure or sequence of the product.

DATA IMAGES



**GTX26827 WB Image**

Western Blot of GTX26827 Sample: Rabbit IgG. Load: 50 ng per lane. Secondary antibody: GTX26827 at 1:1,000 for 60 min at RT. Predicted/Observed size: 55 and 28 kDa for Rabbit IgG.



**GTX26827 WB Image**

WB analysis of rabbit IgG using GTX26827 Chicken Anti-Rabbit IgG antibody (TxRd).  
Loading : 50 ng  
Dilution : 1:1000



For full product information, images and publications, please visit our [website](#).