

Chicken Anti-Rat IgG antibody (FITC)

Cat. No. GTX26832

Host	Chicken
Clonality	Polyclonal
Isotype	IgY
Application	ICC/IF, FACS, Dot, ELISA
Reactivity	Rat

Package
1 mg

APPLICATION

Application Note

*Optimal dilutions/concentrations should be determined by the researcher.

Suggested dilution	Recommended dilution
ICC/IF	1:1000-1:5000
FACS	1:500-1:2500
Dot	Assay dependent
ELISA	1:10000-1:50000

Not tested in other applications.

PROPERTIES

Form	Liquid
Buffer	20mM Potassium Phosphate, 150mM NaCl, 1% BSA
Preservative	0.01% Sodium azide
Storage	Store as concentrated solution. Centrifuge briefly prior to opening vial. For short-term storage (1-2 weeks), store at 4°C. For long-term storage, aliquot and store at -20°C or below. Avoid multiple freeze-thaw cycles. Protect from light.
Concentration	1 mg/ml (Please refer to the vial label for the specific concentration.)
Immunogen	Rat IgG whole molecule
Purification	Purified by antigen-affinity chromatography. From serum
Conjugation	Fluorescein isothiocyanate (FITC) Ratio : 3.22 molecules FITC per Chicken IgG molecule.

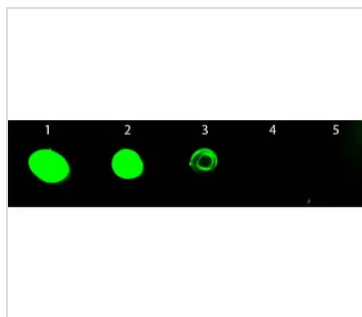
Note

For laboratory research use only. Not for any clinical, therapeutic, or diagnostic use in humans or animals. Not for animal or human consumption.

Purchasers shall not, and agree not to enable third parties to, analyze, copy, reverse engineer or otherwise attempt to determine the structure or sequence of the product.



For full product information, images and publications, please visit our [website](#).

DATA IMAGES

GTX26832 Dot Image

Dot blot analysis of rat IgG using GTX26832 Chicken Anti-Rat IgG antibody (FITC).

Lane 1 : 50 ng

Lane 2 : 16.67 ng

Lane 3 : 5.56 ng

Lane 4 : 1.85 ng

Lane 5 : 0.62 ng

Dilution : 1:1000



For full product information, images and publications, please visit our [website](https://www.genetex.com).