

## Sheep Anti-Rat IgG antibody

Cat. No. GTX26847

Host	Sheep
Clonality	Polyclonal
Isotype	IgG
Application	WB, ELISA, IHC
Reactivity	Rat

**Package**  
1 mg

## APPLICATION

## Application Note

\*Optimal dilutions/concentrations should be determined by the researcher.

Suggested dilution	Recommended dilution
WB	1:2000-1:10000
ELISA	1:20000-1:100000
IHC	1:1000-1:5000

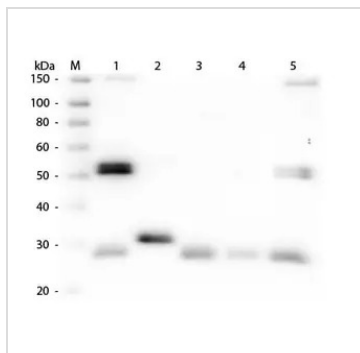
Not tested in other applications.

## PROPERTIES

Form	Liquid
Buffer	20mM Potassium Phosphate, 150mM NaCl
Preservative	0.01% Sodium azide
Storage	Store as concentrated solution. Centrifuge briefly prior to opening vial. For short-term storage (1-2 weeks), store at 4°C. For long-term storage, aliquot and store at -20°C or below. Avoid multiple freeze-thaw cycles.
Concentration	2 mg/ml (Please refer to the vial label for the specific concentration.)
Immunogen	Rat IgG whole molecule
Purification	IgG fraction This product was prepared from monospecific antiserum by immunoaffinity chromatography using Rat IgG coupled to agarose beads followed by solid phase adsorptions to remove any unwanted reactivities.
Conjugation	Unconjugated
Note	<p>For laboratory research use only. Not for any clinical, therapeutic, or diagnostic use in humans or animals. Not for animal or human consumption.</p> <p>Purchasers shall not, and agree not to enable third parties to, analyze, copy, reverse engineer or otherwise attempt to determine the structure or sequence of the product.</p>



For full product information, images and publications, please visit our [website](#).

**DATA IMAGES**

**GTX26847 WB Image**

WB analysis of various samples using GTX26847 Sheep Anti-Rat IgG antibody.

Lane 1 : Rat IgG

Lane 2 : Rat IgG Fc

Lane 3 : Rat IgG Fab

Lane 4 : Rat IgM

Lane 5 : Rat serum

Loading : 50 ng

Dilution : 1:1000



For full product information, images and publications, please visit our [website](https://www.genetex.com).