

Chicken Anti-Human IgG antibody (HRP)

Cat. No. GTX26864

Host	Chicken
Clonality	Polyclonal
Isotype	IgY
Applications	WB, ELISA, IHC
Reactivity	Human

References (1)

Package

1 mg

Applications

Application Note

*Optimal dilutions/concentrations should be determined by the researcher.

Suggested dilution	Recommended dilution
WB	1:1000-1:5000
ELISA	1:20000-1:40000
IHC	1:500-1:2500

Not tested in other applications.

Properties

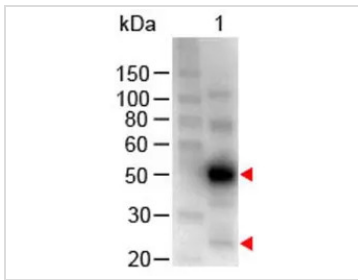
Form	Liquid
Buffer	20mM Potassium Phosphate, 150mM NaCl, 1% BSA
Preservative	0.01% Gentamicin Sulfate
Storage	Store as concentrated solution. Centrifuge briefly prior to opening vial. For short-term storage (1-2 weeks), store at 4°C. For long-term storage, aliquot and store at -20°C or below. Avoid multiple freeze-thaw cycles.
Concentration	1 mg/ml (Please refer to the vial label for the specific concentration.)
Immunogen	Human IgG whole molecule
Purification	Purified by antigen-affinity chromatography. From serum
Conjugation	Horseradish peroxidase(HRP)

Note

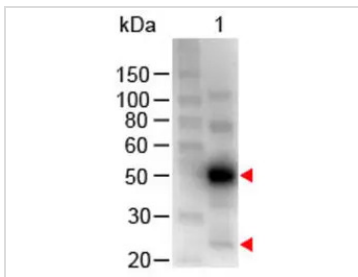
For laboratory research use only. Not for any clinical, therapeutic, or diagnostic use in humans or animals. Not for animal or human consumption.

Purchasers shall not, and agree not to enable third parties to, analyze, copy, reverse engineer or otherwise attempt to determine the structure or sequence of the product.

For full product information, images and publications, please visit our [website](#).

DATA IMAGES

GTX26864 WB Image

Western Blot of GTX26864 Sample: Human IgG. Load: 100 ng per lane. Secondary antibody: GTX26864 at 1:1,000 for 60 min at RT. Predicted/Observed size: 55 and 28 kDa.


GTX26864 WB Image

WB analysis of human IgG using GTX26864 Chicken Anti-Human IgG antibody (HRP).
 Loading : 100 ng
 Dilution : 1:1000



For full product information, images and publications, please visit our [website](#).