

Chicken Anti-Human IgG antibody (AP)

Cat. No. GTX26865

Host	Chicken
Clonality	Polyclonal
Isotype	IgY
Applications	WB, ELISA, IHC
Reactivity	Human

Package
1 mg

Applications

Application Note

*Optimal dilutions/concentrations should be determined by the researcher.

Suggested dilution	Recommended dilution
WB	1:500-1:2500
ELISA	1:2000-1:10000
IHC	1:200-1:1000

Not tested in other applications.

Properties

Form	Liquid
Buffer	50mM Tris-HCl, 150mM NaCl, 1mM MgCl ₂ , 0.1mM ZnCl ₂ , 1% BSA, 50% Glycerol
Preservative	0.01% Sodium azide
Storage	Store as concentrated solution. Centrifuge briefly prior to opening vial. Store at 4°C. DO NOT FREEZE.
Concentration	1 mg/ml (Please refer to the vial label for the specific concentration.)
Immunogen	Human IgG whole molecule
Purification	IgG fraction This product was prepared from monospecific antiserum by immunoaffinity chromatography using Human IgG coupled to agarose beads followed by solid phase adsorptions to remove any unwanted reactivities.
Conjugation	Alkaline Phosphatase (AP)

Note

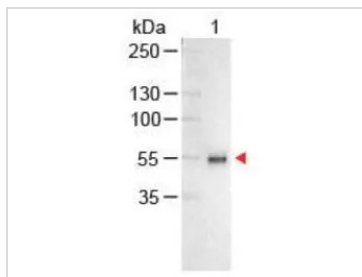
For laboratory research use only. Not for any clinical, therapeutic, or diagnostic use in humans or animals. Not for animal or human consumption.

Purchasers shall not, and agree not to enable third parties to, analyze, copy, reverse engineer or otherwise attempt to determine the structure or sequence of the product.



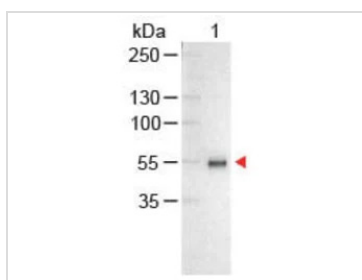
For full product information, images and publications, please visit our [website](#).

DATA IMAGES



GTX26865 WB Image

Western Blot of GTX26865 Sample: Human IgG Load: 100 ng per lane Secondary antibody: GTX26865 at 1:1,000 for 60 min at RT. Predicted/Observed size: 55 and 28 kDa.



GTX26865 WB Image

WB analysis of human IgG using GTX26865 Chicken Anti-Human IgG antibody (AP).

Loading : 100 ng

Dilution : 1:1000



For full product information, images and publications, please visit our [website](#).