

Donkey Anti-Goat IgG antibody (TxRd)

Cat. No. GTX26883

Host	Donkey
Clonality	Polyclonal
Isotype	IgG
Application	WB, ICC/IF, FACS, Dot, ELISA
Reactivity	Goat

Package
1 mg

APPLICATION

Application Note

*Optimal dilutions/concentrations should be determined by the researcher.

Suggested dilution	Recommended dilution
WB	Assay dependent
ICC/IF	1:1000-1:5000
FACS	1:500-1:2500
Dot	Assay dependent
ELISA	1:10000-1:50000

Not tested in other applications.

PROPERTIES

Form	Liquid
Buffer	20mM Potassium Phosphate, 150mM NaCl, 1% BSA
Preservative	0.01% Sodium azide
Storage	Store as concentrated solution. Centrifuge briefly prior to opening vial. For short-term storage (1-2 weeks), store at 4°C. For long-term storage, aliquot and store at -20°C or below. Avoid multiple freeze-thaw cycles. Protect from light.
Concentration	2 mg/ml (Please refer to the vial label for the specific concentration.)
Immunogen	Goat IgG whole molecule
Purification	IgG fraction This product was prepared from monospecific antiserum by immunoaffinity chromatography using Goat IgG coupled to agarose beads followed by solid phase adsorptions to remove any unwanted reactivities.
Conjugation	Texas Red (TxRd)

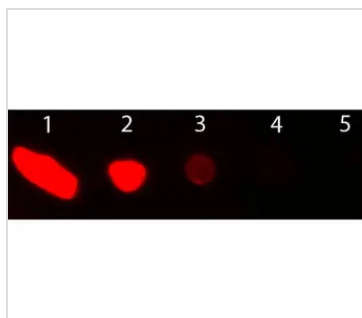


For full product information, images and publications, please visit our [website](#).

For laboratory research use only. Not for any clinical, therapeutic, or diagnostic use in humans or animals. Not for animal or human consumption.

Note

Purchasers shall not, and agree not to enable third parties to, analyze, copy, reverse engineer or otherwise attempt to determine the structure or sequence of the product.

DATA IMAGES

GTX26883 Dot Image

Dot blot analysis of goat IgG using GTX26883 Donkey Anti-Goat IgG antibody (TxRd).

Lane 1 : 200 ng

Lane 2 : 66.7 ng

Lane 3 : 22.2 ng

Lane 4 : 7.41 ng

Lane 5 : 2.47 ng

Dilution : 1:1000



For full product information, images and publications, please visit our [website](https://www.genetex.com).