

Goat Anti-Bovine IgG antibody (TxRd)

Cat. No. GTX26932

Host	Goat
Clonality	Polyclonal
Isotype	IgG
Applications	WB, ICC/IF, FCM, ELISA
Reactivity	Bovine

Package
1 mg

Applications

Application Note

*Optimal dilutions/concentrations should be determined by the researcher.

Suggested dilution	Recommended dilution
WB	Assay dependent
ICC/IF	1:1000-1:5000
FCM	1:500-1:2500
ELISA	1:10000-1:50000

Not tested in other applications.

Properties

Form	Liquid
Buffer	20mM Potassium Phosphate, 150mM NaCl, 10mg/ml Polyethylene Glycol (PEG-8000)
Preservative	0.01% Sodium azide
Storage	Store as concentrated solution. Centrifuge briefly prior to opening vial. For short-term storage (1-2 weeks), store at 4°C. For long-term storage, aliquot and store at -20°C or below. Avoid multiple freeze-thaw cycles. Protect from light.
Concentration	2 mg/ml (Please refer to the vial label for the specific concentration.)
Immunogen	Bovine IgG whole molecule
Purification	IgG fraction This product was prepared from monospecific antiserum by immunoaffinity chromatography using Bovine IgG coupled to agarose beads followed by solid phase adsorptions to remove any unwanted reactivities.
Conjugation	Texas Red (TxRd) Wavelength

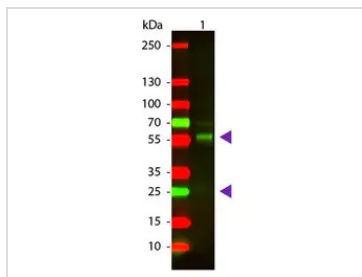
Note

For laboratory research use only. Not for any clinical, therapeutic, or diagnostic use in humans or animals. Not for animal or human consumption.

Purchasers shall not, and agree not to enable third parties to, analyze, copy, reverse engineer or otherwise attempt to determine the structure or sequence of the product.



For full product information, images and publications, please visit our [website](#).

DATA IMAGES

GTX26932 WB Image

WB analysis of bovine IgG using GTX26932 Goat Anti-Bovine IgG antibody (TxRd).

Loading : 100 ng

Dilution : 1:1000



For full product information, images and publications, please visit our [website](#).