

Goat Anti-Rabbit IgG antibody, pre-adsorbed (Cy2)

Cat. No. GTX26940

Host	Goat
Clonality	Polyclonal
Isotype	IgG
Application	WB, ICC/IF, FACS, Dot, ELISA, Multiplexing
Reactivity	Rabbit

Package
100 µg

APPLICATION

Application Note

*Optimal dilutions/concentrations should be determined by the researcher.

Suggested dilution	Recommended dilution
WB	Assay dependent
ICC/IF	1:1000-1:5000
FACS	1:500-1:2500
Dot	Assay dependent
ELISA	1:10000-1:50000
Multiplexing	Assay dependent

Not tested in other applications.

Product Note

Pre-adsorbed with Bovine, Chicken, Goat, Guinea Pig, Hamster, Horse, Human, Mouse, Rat and Sheep serum proteins. May react with immunoglobulins from other species.

PROPERTIES

Form	Liquid
Buffer	20mM Potassium Phosphate, 150mM NaCl, 1% BSA
Preservative	0.01% Sodium azide
Storage	Store as concentrated solution. Centrifuge briefly prior to opening vial. For short-term storage (1-2 weeks), store at 4°C. For long-term storage, aliquot and store at -20°C or below. Avoid multiple freeze-thaw cycles. Protect from light.
Concentration	1 mg/ml (Please refer to the vial label for the specific concentration.)
Immunogen	Rabbit IgG whole molecule
Purification	Purified by antigen-affinity chromatography using Rabbit IgG coupled to agarose beads followed by solid phase adsorptions to remove any unwanted reactivities. From serum



For full product information, images and publications, please visit our [website](#).

Date 2024 / 04 / 30 Page 1 of 2

Conjugation

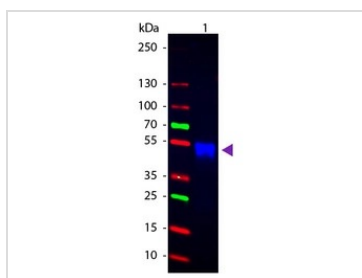
Cyanine2 (Cy2)

Note

For laboratory research use only. Not for any clinical, therapeutic, or diagnostic use in humans or animals. Not for animal or human consumption.

Purchasers shall not, and agree not to enable third parties to, analyze, copy, reverse engineer or otherwise attempt to determine the structure or sequence of the product.

DATA IMAGES

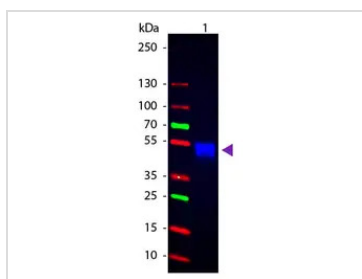


GTX26940 WB Image

GTX26940 Rabbit IgG antibody, pre-adsorbed (Cy2) detects rabbit IgG by Western Blot analysis.

1. 50 ng rabbit IgG

GTX26940 Rabbit IgG antibody, pre-adsorbed (Cy2) dilution: 1:1000



GTX26940 WB Image

WB analysis of rabbit IgG using GTX26940 Goat Anti-Rabbit IgG antibody, pre-adsorbed (Cy2).

Loading : 50 ng

Dilution : 1:1000



For full product information, images and publications, please visit our [website](https://www.genetex.com).