

## Donkey Anti-Goat IgG antibody, pre-adsorbed (Cy2)

Cat. No. GTX26948

Host	Donkey
Clonality	Polyclonal
Isotype	IgG
Applications	WB, ICC/IF, FCM, ELISA, IHC
Reactivity	Goat

References ( 1 )

Package

100 µg

## Applications

## Application Note

\*Optimal dilutions/concentrations should be determined by the researcher.

Suggested dilution	Recommended dilution
WB	Assay dependent
ICC/IF	1:1000-1:5000
FCM	1:500-1:2500
ELISA	1:10000-1:50000
IHC	Assay dependent

Not tested in other applications.

## Product Note

This antibody has been pre-adsorbed against Chicken, Guinea Pig, Hamster, Horse, Mouse, Rabbit and Rat serum proteins to ensure minimal cross-reactivity. Cross-reactivity with other species, however, is possible.

## Properties

Form	Liquid
Buffer	0.02M Potassium Phosphate, 0.15M NaCl, 1% BSA
Preservative	0.01% Sodium azide
Storage	Store as concentrated solution. Centrifuge briefly prior to opening vial. For short-term storage (1-2 weeks), store at 4°C. For long-term storage, aliquot and store at -20°C or below. Avoid multiple freeze-thaw cycles. Protect from light.
Concentration	1 mg/ml (Please refer to the vial label for the specific concentration.)
Immunogen	Goat IgG whole molecule
Purification	Immunogen affinity purified
Conjugation	Cyanine2 (Cy2) <a href="#">Wavelength</a>



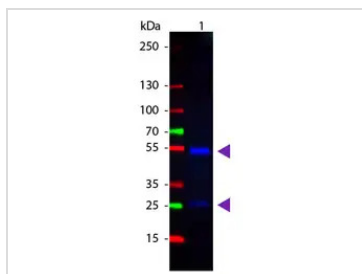
For full product information, images and publications, please visit our [website](#).

For laboratory research use only. Not for any clinical, therapeutic, or diagnostic use in humans or animals. Not for animal or human consumption.

## Note

Purchasers shall not, and agree not to enable third parties to, analyze, copy, reverse engineer or otherwise attempt to determine the structure or sequence of the product.

## DATA IMAGES



### GTX26948 WB Image

WB analysis of goat IgG using GTX26948 Donkey Anti-Goat IgG antibody, pre-adsorbed (Cy2).

Loading : 50 ng

Dilution : 1:1000



For full product information, images and publications, please visit our [website](https://www.genetex.com).