

VWF antibody

Cat. No. GTX26994

| | |
|---------------------|--------------|
| Host | Rabbit |
| Clonality | Polyclonal |
| Isotype | IgG |
| Applications | WB, IHC-P |
| Reactivity | Human, Mouse |

References (2)

Package

100 µl

Applications

Application Note

*Optimal dilutions/concentrations should be determined by the researcher.

| Suggested dilution | Recommended dilution |
|--------------------|----------------------|
| WB | Assay dependent |
| IHC-P | Assay dependent |

Not tested in other applications.

Calculated MW 309 kDa. ([Note](#))**Product Note**

The antibody specifically reacts with the cytoplasm of human endothelial cells from normal and neoplastic blood and from lymphatic vessels. It also reacts with human endocardium, platelets and megakaryocytes. It may be used for immunohistological studies of the vascular structures in frozen tissue preparations and enzymatically pre-digested, formalin, methacarn, Bouin's or ethanol-fixed and paraffin-embedded tissue sections.

Properties

| | |
|----------------------|--|
| Form | Liquid |
| Buffer | PBS |
| Preservative | 15mM Sodium azide |
| Storage | Store as concentrated solution. Centrifuge briefly prior to opening vial. For short-term storage (1-2 weeks), store at 4°C. For long-term storage, aliquot and store at -20°C or below. Avoid multiple freeze-thaw cycles. |
| Concentration | Batch dependent (Please refer to the vial label for the specific concentration.) |
| Immunogen | von Willebrand Factor (Factor VIII-related antigen) from human plasma. |
| Purification | IgG fraction |
| Conjugation | Unconjugated |



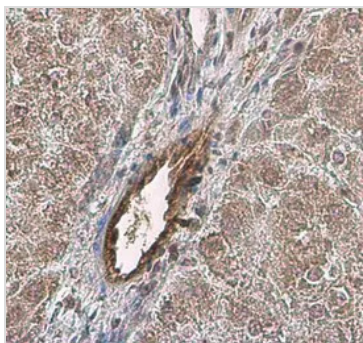
For full product information, images and publications, please visit our [website](#).

For laboratory research use only. Not for any clinical, therapeutic, or diagnostic use in humans or animals. Not for animal or human consumption.

Note

Purchasers shall not, and agree not to enable third parties to, analyze, copy, reverse engineer or otherwise attempt to determine the structure or sequence of the product.

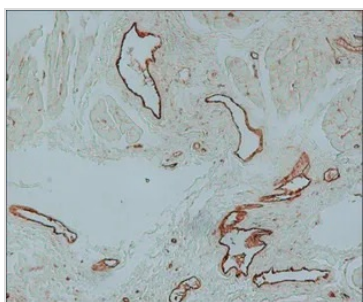
DATA IMAGES

**GTX26994 IHC-P Image**

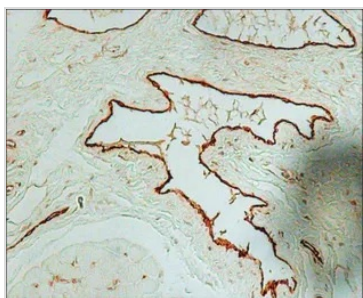
VWF antibody detects VWF protein at cell membrane in mouse liver by immunohistochemical analysis.

Sample: Paraffin-embedded mouse liver.

VWF antibody (GTX26994) diluted at 1:2000.

**GTX26994 IHC-P Image**

IHC-P analysis of human kidney tissue using GTX26994 VWF antibody at 1:2,000.

**GTX26994 IHC-P Image**

IHC-P analysis of human kidney tissue using GTX26994 VWF antibody at 1:2000.



For full product information, images and publications, please visit our [website](#).