

Donkey Anti-Goat IgG antibody, F(ab')<sub>2</sub> fragment, pre-adsorbed (PE)

Cat. No. GTX27004

Host	Donkey
Clonality	Polyclonal
Isotype	IgG F(ab') <sub>2</sub>
Application	WB, ICC/IF, FACS, Dot, ELISA
Reactivity	Goat

Package  
500 µl

## APPLICATION

## Application Note

\*Optimal dilutions/concentrations should be determined by the researcher.

Suggested dilution	Recommended dilution
WB	Assay dependent
ICC/IF	1:100-1:250
FACS	1:100-1:250
Dot	Assay dependent
ELISA	Assay dependent

Not tested in other applications.

## Product Note

Pre-adsorbed with Chicken, Guinea Pig, Syrian Hamster, Horse, Human, Mouse, Rabbit, and Rat serum proteins. May react with immunoglobulins from other species.

## PROPERTIES

Form	Liquid
Buffer	20mM Potassium Phosphate, 150mM NaCl, 1% BSA
Preservative	0.01% Sodium azide
Storage	Store as concentrated solution. Centrifuge briefly prior to opening vial. Store at 4°C. DO NOT FREEZE. Protect from light.
Concentration	1 mg/ml (Please refer to the vial label for the specific concentration.)
Immunogen	Goat IgG whole molecule
Purification	Purified by antigen-affinity chromatography using Goat IgG coupled to agarose beads followed by solid phase adsorptions to remove any unwanted reactivities, pepsin digestion, and chromatographic separation. From serum
Conjugation	Phycoerythrin (PE) Ratio : 4.74 molecules PE per Donkey IgG F(ab') <sub>2</sub> molecule.

For full product information, images and publications, please visit our [website](#).

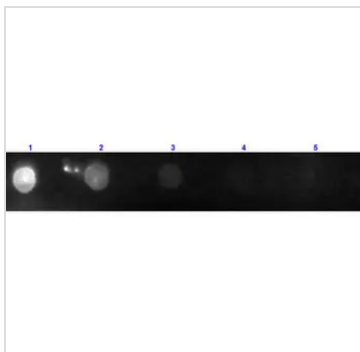
Date 2024 / 05 / 14 Page 1 of 2

For laboratory research use only. Not for any clinical, therapeutic, or diagnostic use in humans or animals. Not for animal or human consumption.

## Note

Purchasers shall not, and agree not to enable third parties to, analyze, copy, reverse engineer or otherwise attempt to determine the structure or sequence of the product.

## DATA IMAGES



### GTX27004 Dot Image

Dot blot analysis of goat IgG using GTX27004 Donkey Anti-Goat IgG antibody, F(ab')<sub>2</sub> fragment, pre-adsorbed (PE).

Lane 1 : 100 ng

Lane 2 : 33.3 ng

Lane 3 : 11.1 ng

Lane 4 : 3.7 ng

Lane 5 : 1.23 ng

Dilution : 1 µg/mL



### GTX27004 Dot Image

Dot blot analysis of goat IgG using GTX27004 Donkey Anti-Goat IgG antibody, F(ab')<sub>2</sub> fragment, pre-adsorbed (PE).

Dilution : 1:1000



For full product information, images and publications, please visit our [website](#).