

MMP2 antibody [2C1]

Cat. No. GTX27033

Host	Mouse
Clonality	Monoclonal
Isotype	IgG1
Applications	WB, ICC/IF, IHC-P, IHC-Fr, IP, ELISA
Reactivity	Human, Mouse, Rat, Guinea pig

References (1)

Package

50 µl

Applications

Application Note

*Optimal dilutions/concentrations should be determined by the researcher.

Suggested dilution	Recommended dilution
WB	2 - 5 µg/ml
ICC/IF	1:10 - 1:500
IHC-P	5 µg/ml
IHC-Fr	5 µg/ml
IP	1:10 - 1:500
ELISA	1 µg/ml

Not tested in other applications.

Calculated MW 74 kDa. ([Note](#))

Product Note This antibody is specific for pro and active MMP-2.

Properties

Form	Liquid
Buffer	PBS
Preservative	0.05% Sodium azide
Storage	Store as concentrated solution. Centrifuge briefly prior to opening vial. For short-term storage (1-2 weeks), store at 4°C. For long-term storage, aliquot and store at -20°C or below. Avoid multiple freeze-thaw cycles.
Concentration	1 mg/ml (Please refer to the vial label for the specific concentration.)
Immunogen	Activated recombinant human MMP2. [UniProt# P08253]
Purification	Protein G purified
Conjugation	Unconjugated



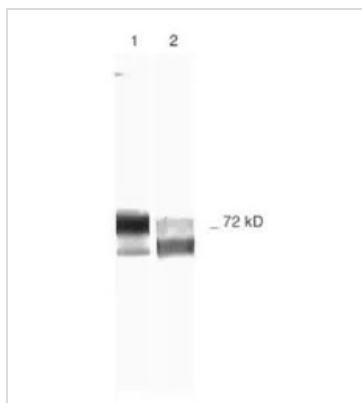
For full product information, images and publications, please visit our [website](#).

For laboratory research use only. Not for any clinical, therapeutic, or diagnostic use in humans or animals. Not for animal or human consumption.

Note

Purchasers shall not, and agree not to enable third parties to, analyze, copy, reverse engineer or otherwise attempt to determine the structure or sequence of the product.

DATA IMAGES

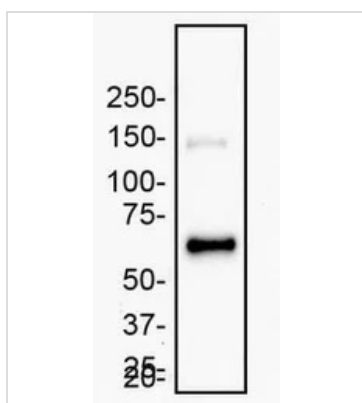


GTX27033 WB Image

WB analysis of multiple samples using GTX27033 MMP2 antibody [2C1].

Lane 1 : human recombinant mmp-2

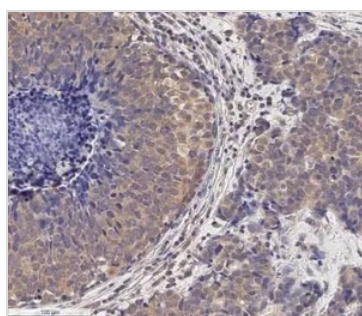
Lane 2 : schwann cell



GTX27033 WB Image

WB analysis of CHO cell overexpressing human mmp-2 protein using GTX27033 MMP2 antibody [2C1].

Dilution : 2 µg/ml



GTX27033 IHC-P Image

IHC-P analysis of human breast carcinoma tissue using GTX27033 MMP2 antibody [2C1].

Dilution : 5 µg/ml

Antigen retrieval : Heat induced antigen retrieval (HIER) using 10mM sodium citrate buffer (pH 6.0)



For full product information, images and publications, please visit our [website](#).