

MGMT antibody [MT 23.2]

Cat. No. GTX27045

| | |
|-------------|-----------------------------|
| Host | Mouse |
| Clonality | Monoclonal |
| Isotype | IgG2b |
| Application | WB, ICC/IF, IHC-P, FACS, MS |
| Reactivity | Human |

Reference (2)

Package

100 µl

APPLICATION

Application Note

*Optimal dilutions/concentrations should be determined by the researcher.

| Suggested dilution | Recommended dilution |
|--------------------|----------------------|
| WB | 1:1000 |
| ICC/IF | 1:500 |
| IHC-P | 1:500 - 1:2000 |
| FACS | 1 - 2 µg/mL |
| MS | Assay dependent |

Not tested in other applications.

Calculated MW 22 kDa. ([Note](#))

Product Note We do not recommend use of this product for Mouse samples.

PROPERTIES

| | |
|---------------|----------------------------------------------------------------------------------------------------------------------------------------------------------------------------------------------------------------------------|
| Form | Liquid |
| Buffer | PBS |
| Preservative | 0.02% Sodium azide |
| Storage | Store as concentrated solution. Centrifuge briefly prior to opening vial. For short-term storage (1-2 weeks), store at 4°C. For long-term storage, aliquot and store at -20°C or below. Avoid multiple freeze-thaw cycles. |
| Concentration | 1 mg/ml (Please refer to the vial label for the specific concentration.) |
| Immunogen | Recombinant human MGMT (O6-methylguanine-DNA methyltransferase) purified from E. coli [UniProt# P16455] |
| Purification | Protein G purified |
| Conjugation | Unconjugated |



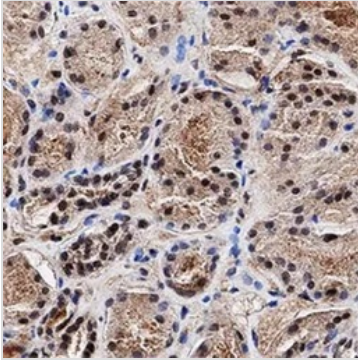
For full product information, images and publications, please visit our [website](#).

For laboratory research use only. Not for any clinical, therapeutic, or diagnostic use in humans or animals. Not for animal or human consumption.

Note

Purchasers shall not, and agree not to enable third parties to, analyze, copy, reverse engineer or otherwise attempt to determine the structure or sequence of the product.

DATA IMAGES

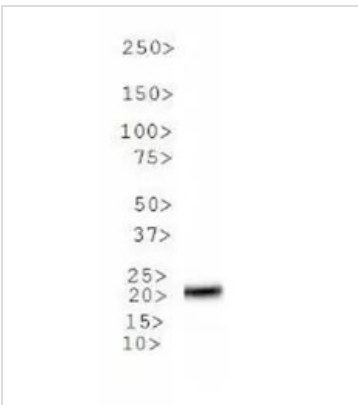


GTX27045 IHC-P Image

IHC-P analysis of human kidney tissue using GTX27045 MGMT antibody [MT 23.2].

Dilution : 1:2000

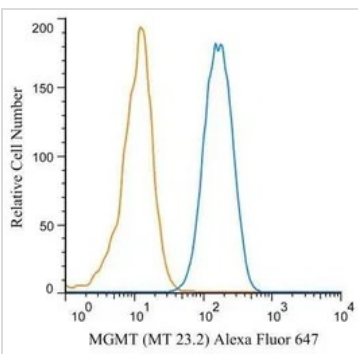
Antigen retrieval : Heat induced antigen retrieval (HIER) using 10mM sodium citrate buffer (pH 6.0)



GTX27045 WB Image

WB analysis of MCF-7 cell lysate using GTX27045 MGMT antibody [MT 23.2].

Dilution : 1:1000



GTX27045 FACS Image

FACS (Intracellular staining) analysis of Raji cells using GTX27045 MGMT antibody [MT 23.2].

Blue : Primary antibody

Orange : isotype control

Dilution : 2 µg/mL

Fixation : 4% PFA

Permibilization : 0.1% saponin



For full product information, images and publications, please visit our [website](#).