

Goat Anti-Rabbit IgG antibody, Fab fragment (FITC)

Cat. No. GTX27050

Host	Goat
Clonality	Polyclonal
Isotype	IgG Fab
Applications	WB, ICC/IF, Dot, ELISA
Reactivity	Rabbit

References (4)

Package

1 mg

Applications

Application Note

*Optimal dilutions/concentrations should be determined by the researcher.

Suggested dilution	Recommended dilution
WB	Assay dependent
ICC/IF	1:1000-1:5000
Dot	Assay dependent
ELISA	1:10000-1:50000

Not tested in other applications.

Properties

Form	Liquid
Buffer	20mM Potassium Phosphate, 150mM NaCl, 1% BSA
Preservative	0.01% Sodium azide
Storage	Store as concentrated solution. Centrifuge briefly prior to opening vial. For short-term storage (1-2 weeks), store at 4°C. For long-term storage, aliquot and store at -20°C or below. Avoid multiple freeze-thaw cycles. Protect from light.
Concentration	1 mg/ml (Please refer to the vial label for the specific concentration.)
Immunogen	Rabbit IgG whole molecule
Purification	IgG fraction This product was prepared from monospecific antiserum by immunoaffinity chromatography using Rabbit IgG coupled to agarose beads followed by solid phase adsorptions to remove any unwanted reactivities, papain digestion and chromatographic separation.
Conjugation	Fluorescein isothiocyanate (FITC) Wavelength Ratio : 2.0 molecules FITC per Goat IgG Fab molecule.



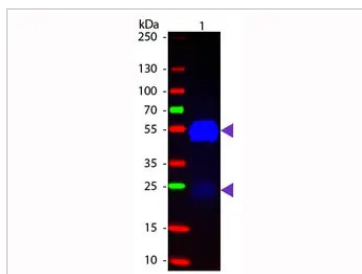
For full product information, images and publications, please visit our [website](#).

For laboratory research use only. Not for any clinical, therapeutic, or diagnostic use in humans or animals. Not for animal or human consumption.

Note

Purchasers shall not, and agree not to enable third parties to, analyze, copy, reverse engineer or otherwise attempt to determine the structure or sequence of the product.

DATA IMAGES



GTx27050 WB Image

WB analysis of rabbit IgG using GTx27050 Goat Anti-Rabbit IgG antibody, Fab fragment (FITC).

Loading : 50 ng

Dilution : 1:1000



For full product information, images and publications, please visit our [website](https://www.genetex.com).