

Goat Anti-Mouse IgG antibody, pre-adsorbed (FITC)

Cat. No. GTX27064

| | |
|--------------------|-----------------------------------|
| Host | Goat |
| Clonality | Polyclonal |
| Isotype | IgG |
| Application | WB, ICC/IF, FACS, Dot, ELISA, IHC |
| Reactivity | Mouse |

Reference (1)
Package
100 µg

APPLICATION

Application Note

*Optimal dilutions/concentrations should be determined by the researcher.

| Suggested dilution | Recommended dilution |
|--------------------|----------------------|
| WB | Assay dependent |
| ICC/IF | 1:1000-1:5000 |
| FACS | 1:500-1:2500 |
| Dot | Assay dependent |
| ELISA | 1:10000-1:50000 |
| IHC | Assay dependent |

Not tested in other applications.

Product Note

Pre-adsorbed with Bovine, Chicken, Goat, Guinea Pig, Hamster, Horse, Human, Rabbit, Rat and Sheep serum proteins. May react with immunoglobulins from other species.

PROPERTIES

| | |
|----------------------|--|
| Form | Liquid |
| Buffer | 20mM Potassium Phosphate, 150mM NaCl, 1% BSA |
| Preservative | 0.01% Sodium azide |
| Storage | Store as concentrated solution. Centrifuge briefly prior to opening vial. For short-term storage (1-2 weeks), store at 4°C. For long-term storage, aliquot and store at -20°C or below. Avoid multiple freeze-thaw cycles. Protect from light. |
| Concentration | 1 mg/ml (Please refer to the vial label for the specific concentration.) |
| Immunogen | Mouse IgG whole molecule |
| Purification | Purified by antigen-affinity chromatography using Mouse IgG coupled to agarose beads followed by solid phase adsorptions to remove any unwanted reactivities. From serum |



For full product information, images and publications, please visit our [website](#).

Conjugation

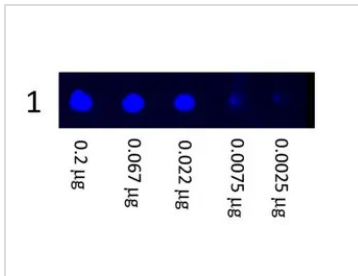
Fluorescein isothiocyanate (FITC)
Ratio : 3.08 molecules FITC per Goat IgG molecule.

Note

For laboratory research use only. Not for any clinical, therapeutic, or diagnostic use in humans or animals. Not for animal or human consumption.

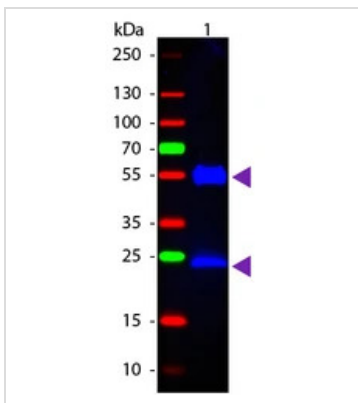
Purchasers shall not, and agree not to enable third parties to, analyze, copy, reverse engineer or otherwise attempt to determine the structure or sequence of the product.

DATA IMAGES



GTx27064 Dot Image

Dot Blot showing the detection of Mouse IgG (GTx27064). A three-fold serial dilution of Mouse IgG starting at 200ng was spotted onto 0.45 um nitrocellulose. After blocking, GTx27064 was used at 1:1000.

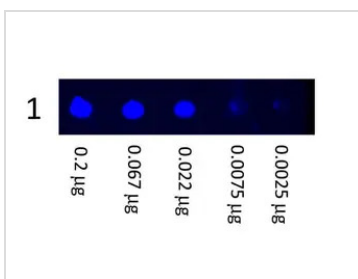


GTx27064 WB Image

WB analysis of mouse IgG using GTx27064 Goat Anti-Mouse IgG antibody, pre-adsorbed (FITC).

Loading : 50 ng

Dilution : 1:1000



GTx27064 Dot Image

Dot blot analysis of mouse IgG using GTx27064 Goat Anti-Mouse IgG antibody, pre-adsorbed (FITC).

Dilution : 1:1000



For full product information, images and publications, please visit our [website](https://www.genetex.com).