

Goat Anti-Rabbit IgG antibody, pre-adsorbed (HRP)

Cat. No. GTX27090

Host	Goat
Clonality	Polyclonal
Isotype	IgG
Applications	WB, Dot, ELISA, IHC
Reactivity	Rabbit

Package
100 µg

Applications

Application Note

*Optimal dilutions/concentrations should be determined by the researcher.

Suggested dilution	Recommended dilution
WB	1:2000-1:10000
Dot	Assay dependent
ELISA	1:20000-1:100000
IHC	1:1000-1:5000

Not tested in other applications.

Product Note

Pre-adsorbed with Bovine, Chicken, Goat, Guinea Pig, Hamster, Horse, Human, Mouse, Rat and Sheep serum proteins. May react with immunoglobulins from other species.

Properties

Form	Liquid
Buffer	20mM Potassium Phosphate, 150mM NaCl, 1% BSA
Preservative	0.01% Gentamicin Sulfate
Storage	Store as concentrated solution. Centrifuge briefly prior to opening vial. For short-term storage (1-2 weeks), store at 4°C. For long-term storage, aliquot and store at -20°C or below. Avoid multiple freeze-thaw cycles.
Concentration	1 mg/ml (Please refer to the vial label for the specific concentration.)
Immunogen	Rabbit IgG whole molecule
Purification	Purified by antigen-affinity chromatography using Rabbit IgG coupled to agarose beads followed by solid phase adsorptions to remove any unwanted reactivities. From serum
Conjugation	Horseradish peroxidase(HRP)

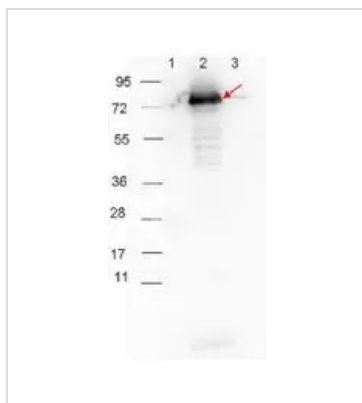


For full product information, images and publications, please visit our [website](#).

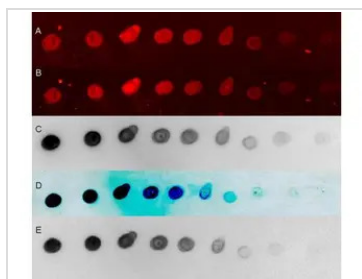
For laboratory research use only. Not for any clinical, therapeutic, or diagnostic use in humans or animals. Not for animal or human consumption.

Note

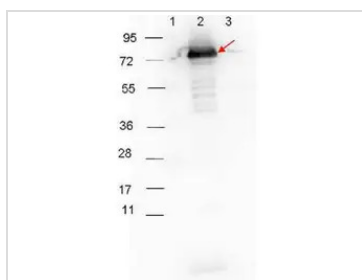
Purchasers shall not, and agree not to enable third parties to, analyze, copy, reverse engineer or otherwise attempt to determine the structure or sequence of the product.

DATA IMAGES

GTX27090 WB Image

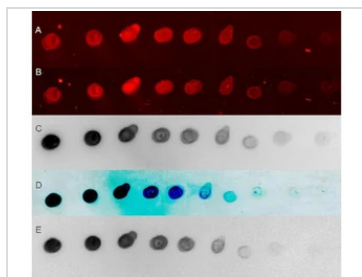
GTX27090 secondary antibody was used at 1:40,000 in blocking buffer to detect a rabbit primary antibody by Western Blot. Anti p27 antibody (GTX48799, 1:1000 RT 30 minutes) showed detection of 0.1 μ g of recombinant p27 protein. Lane 1: Molecular weight markers. Lane 2: MBP-p27 fusion protein (arrow; expected MW: 73.3 kDa). Lane 3: MBP alone. Protein was run on a 4-20% gel, then transferred to 0.45 μ m nitrocellulose and blocked with 1% BSA-TTBS overnight at 4°C. Blot was imaged on the VersaDoc MP 4000 imaging system (Bio-Rad).


GTX27090 Dot Image

GeneTex secondary antibodies detect rabbit primary antibodies in a variety of platforms. Shown here is a serial 1:1 dilution of control rabbit IgG protein 250ng starting total load Co-incubated with GeneTex HRP conjugated Goat anti Rabbit IgG antibody (GTX27090) and Dylight 649 conjugated goat anti Rabbit IgG antibody at 1:20K in blocking buffer.


GTX27090 WB Image

WB analysis of various samples using anti-p27 antibody followed by GTX27090 Goat Anti-Rabbit IgG antibody, pre-adsorbed (HRP).
Lane 1 : Protein ladder
Lane 2 : MBP-p27 protein
Lane 3 : MBP
Dilution : 1:40000


GTX27090 Dot Image

Dot blot analysis of serially diluted rabbit IgG using GTX27090 Goat Anti-Rabbit IgG antibody, pre-adsorbed (HRP) detected by different platforms.
Dilution : 1:20000



For full product information, images and publications, please visit our [website](https://www.genetex.com).