

Goat Anti-Rat IgG antibody, pre-adsorbed

Cat. No. GTX27092

Host	Goat
Clonality	Polyclonal
Isotype	IgG
Applications	WB, ELISA, IHC
Reactivity	Rat

Package
1 mg

Applications

Application Note

*Optimal dilutions/concentrations should be determined by the researcher.

Suggested dilution	Recommended dilution
WB	1:1000-1:4000
ELISA	1:10000-1:40000
IHC	1:500-1:2000

Not tested in other applications.

Product Note

Pre-adsorbed with Bovine, Chicken, Goat, Guinea Pig, Hamster, Horse, Human, Mouse, Rabbit and Sheep serum proteins. May react with immunoglobulins from other species.

Properties

Form	Liquid
Buffer	20mM Potassium Phosphate, 150mM NaCl
Preservative	0.01% Sodium azide
Storage	Store as concentrated solution. Centrifuge briefly prior to opening vial. For short-term storage (1-2 weeks), store at 4°C. For long-term storage, aliquot and store at -20°C or below. Avoid multiple freeze-thaw cycles.
Concentration	1.1 mg/ml (Please refer to the vial label for the specific concentration.)
Immunogen	Rat IgG whole molecule
Purification	Purified by antigen-affinity chromatography using Rat IgG coupled to agarose beads followed by solid phase adsorptions to remove any unwanted reactivities. From serum
Conjugation	Unconjugated



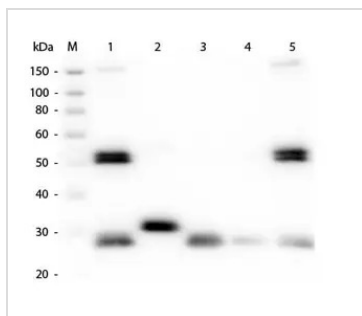
For full product information, images and publications, please visit our [website](#).

For laboratory research use only. Not for any clinical, therapeutic, or diagnostic use in humans or animals. Not for animal or human consumption.

Note

Purchasers shall not, and agree not to enable third parties to, analyze, copy, reverse engineer or otherwise attempt to determine the structure or sequence of the product.

DATA IMAGES

**GTX27092 WB Image**

WB analysis of various samples using GTX27092 Goat Anti-Rat IgG antibody, pre-adsorbed.

Lane 1: Rat IgG

Lane 2: Rat IgG Fc

Lane 3: Rat IgG Fab

Lane 4: Rat IgM

Lane 5: Rat serum

Loading : 50 ng



For full product information, images and publications, please visit our [website](#).