

Goat Anti-Rat IgG antibody, pre-adsorbed (AP)

Cat. No. GTX27098

Host	Goat
Clonality	Polyclonal
Isotype	IgG
Applications	WB, Dot, ELISA, IHC
Reactivity	Rat

Package
100 µg

Applications

Application Note

*Optimal dilutions/concentrations should be determined by the researcher.

Suggested dilution	Recommended dilution
WB	1:500-1:1500
Dot	Assay dependent
ELISA	1:1000-1:13000
IHC	1:200-1:1000

Not tested in other applications.

Product Note

Pre-adsorbed with Bovine, Chicken, Goat, Guinea Pig, Hamster, Horse, Human, Mouse, Rabbit and Sheep serum proteins. May react with immunoglobulins from other species.

Properties

Form	Liquid
Buffer	50mM Tris-HCl, 150mM NaCl, 1mM MgCl ₂ , 0.1mM ZnCl ₂ , 1% BSA, 50% Glycerol
Preservative	0.1% Sodium azide
Storage	Store as concentrated solution. Centrifuge briefly prior to opening vial. Store at 4°C. DO NOT FREEZE.
Concentration	1 mg/ml (Please refer to the vial label for the specific concentration.)
Immunogen	Rat IgG whole molecule
Purification	Purified by antigen-affinity chromatography using Rat IgG coupled to agarose beads followed by solid phase adsorptions to remove any unwanted reactivities. From serum
Conjugation	Alkaline Phosphatase (AP)



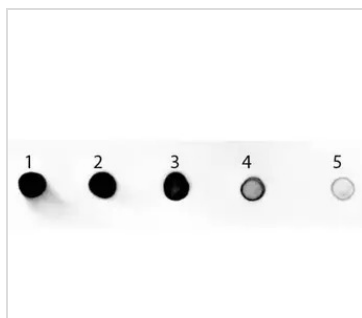
For full product information, images and publications, please visit our [website](#).

For laboratory research use only. Not for any clinical, therapeutic, or diagnostic use in humans or animals. Not for animal or human consumption.

Note

Purchasers shall not, and agree not to enable third parties to, analyze, copy, reverse engineer or otherwise attempt to determine the structure or sequence of the product.

DATA IMAGES



GTx27098 Dot Image

Dot blot analysis of rat IgG using GTx27098 Goat Anti-Rat IgG antibody, pre-adsorbed (AP).

Lane 1 : 100 ng

Lane 2 : 33.3 ng

Lane 3 : 11.1 ng

Lane 4 : 3.7 ng

Lane 5 : 1.23 ng

Dilution : 1:1000



For full product information, images and publications, please visit our [website](#).