

Goat Anti-Chicken IgY antibody, pre-adsorbed (AP)

Cat. No. GTX27119

| | |
|---------------------|---------------------|
| Host | Goat |
| Clonality | Polyclonal |
| Isotype | IgG |
| Applications | WB, Dot, ELISA, IHC |
| Reactivity | Chicken |

Package
100 µg

Applications

Application Note

*Optimal dilutions/concentrations should be determined by the researcher.

| Suggested dilution | Recommended dilution |
|--------------------|----------------------|
| WB | 1:500-1:2500 |
| Dot | Assay dependent |
| ELISA | 1:2000-1:10000 |
| IHC | 1:200-1:1000 |

Not tested in other applications.

Product Note

Pre-adsorbed with Bovine, Goat, Guinea Pig, Hamster, Horse, Human, Mouse, Rabbit, Rat and Sheep serum proteins. May react with immunoglobulins from other species.

Properties

| | |
|----------------------|--|
| Form | Liquid |
| Buffer | 50mM Tris-HCl, 150mM NaCl, 1mM MgCl ₂ , 0.1mM ZnCl ₂ , 1% BSA, 50% Glycerol |
| Preservative | 0.01% Sodium azide |
| Storage | Store as concentrated solution. Centrifuge briefly prior to opening vial. Store at 4°C. DO NOT FREEZE. |
| Concentration | 1 mg/ml (Please refer to the vial label for the specific concentration.) |
| Immunogen | Chicken IgY whole molecule |
| Purification | Purified by antigen-affinity chromatography using Chicken IgG coupled to agarose beads followed by conjugation to fluorochrome and extensive dialysis against the buffer stated above. From serum |
| Conjugation | Alkaline Phosphatase (AP) |



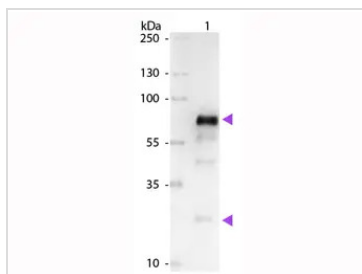
For full product information, images and publications, please visit our [website](#).

For laboratory research use only. Not for any clinical, therapeutic, or diagnostic use in humans or animals. Not for animal or human consumption.

Note

Purchasers shall not, and agree not to enable third parties to, analyze, copy, reverse engineer or otherwise attempt to determine the structure or sequence of the product.

DATA IMAGES



GTx27119 WB Image

WB analysis of chicken IgY using GTx27119 Goat Anti-Chicken IgY antibody, pre-adsorbed (AP).

Loading : 50 ng

Dilution : 1:1000



For full product information, images and publications, please visit our [website](https://www.genetex.com).