

Goat Anti-Guinea Pig IgG antibody, pre-adsorbed

Cat. No. GTX27134

Host	Goat
Clonality	Polyclonal
Isotype	IgG
Application	WB, ELISA, IHC
Reactivity	Guinea pig

Package
1 mg

APPLICATION

Application Note

*Optimal dilutions/concentrations should be determined by the researcher.

Suggested dilution	Recommended dilution
WB	1:2000-1:10000
ELISA	1:50000
IHC	1:1000-1:5000

Not tested in other applications.

Product Note

Pre-adsorbed with Bovine, Chicken, Goat, Hamster, Horse, Human, Mouse, Rabbit, Rat and Sheep serum proteins. May react with immunoglobulins from other species.

PROPERTIES

Form	Liquid
Buffer	20mM Potassium Phosphate, 150mM NaCl
Preservative	0.01% Sodium azide
Storage	Store as concentrated solution. Centrifuge briefly prior to opening vial. For short-term storage (1-2 weeks), store at 4°C. For long-term storage, aliquot and store at -20°C or below. Avoid multiple freeze-thaw cycles.
Concentration	1 mg/ml (Please refer to the vial label for the specific concentration.)
Immunogen	Guinea Pig IgG whole molecule
Purification	Purified by antigen-affinity chromatography using Guinea Pig IgG coupled to agarose beads followed by solid phase adsorptions to remove any unwanted reactivities. From serum
Conjugation	Unconjugated



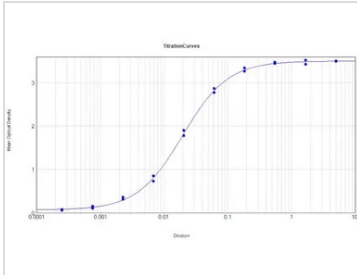
For full product information, images and publications, please visit our [website](#).

Date 2024 / 04 / 28 Page 1 of 2

For laboratory research use only. Not for any clinical, therapeutic, or diagnostic use in humans or animals. Not for animal or human consumption.

Note

Purchasers shall not, and agree not to enable third parties to, analyze, copy, reverse engineer or otherwise attempt to determine the structure or sequence of the product.

DATA IMAGES

GTX27134 ELISA Image

ELISA analysis of guinea pig IgG using serially diluted GTX27134 Goat Anti-Guinea Pig IgG antibody, pre-adsorbed.

Coating : 1 μ g



For full product information, images and publications, please visit our [website](https://www.genetex.com).