

Goat Anti-Guinea Pig IgG antibody, pre-adsorbed (HRP)

Cat. No. GTX27139

Host	Goat
Clonality	Polyclonal
Isotype	IgG
Application	WB, ELISA, IHC
Reactivity	Guinea pig

Package
100 µg

APPLICATION

Application Note

*Optimal dilutions/concentrations should be determined by the researcher.

Suggested dilution	Recommended dilution
WB	1:1000-1:5000
ELISA	1:100000-1:200000
IHC	1:500-1:2500

Not tested in other applications.

Product Note

Pre-adsorbed with Bovine, Chicken, Goat, Hamster, Horse, Human, Mouse, Rabbit, Rat and Sheep serum proteins. May react with immunoglobulins from other species.

PROPERTIES

Form	Liquid
Buffer	20mM Potassium Phosphate, 150mM NaCl, 1% BSA
Preservative	0.01% Gentamicin Sulfate
Storage	Store as concentrated solution. Centrifuge briefly prior to opening vial. For short-term storage (1-2 weeks), store at 4°C. For long-term storage, aliquot and store at -20°C or below. Avoid multiple freeze-thaw cycles.
Concentration	1 mg/ml (Please refer to the vial label for the specific concentration.)
Immunogen	Guinea Pig IgG whole molecule
Purification	Purified by antigen-affinity chromatography using Guinea Pig IgG coupled to agarose beads followed by solid phase adsorptions to remove any unwanted reactivities. From serum
Conjugation	Horseradish peroxidase(HRP)

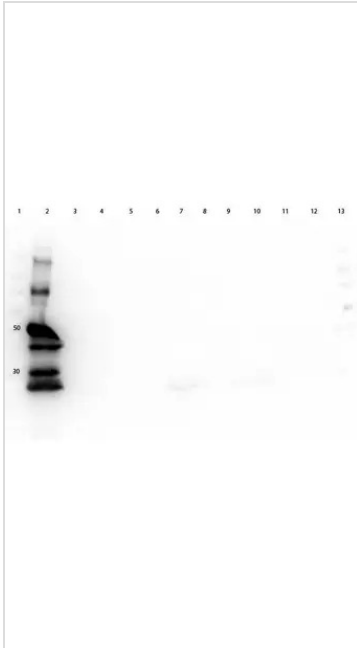


For full product information, images and publications, please visit our [website](#).

For laboratory research use only. Not for any clinical, therapeutic, or diagnostic use in humans or animals. Not for animal or human consumption.

Note

Purchasers shall not, and agree not to enable third parties to, analyze, copy, reverse engineer or otherwise attempt to determine the structure or sequence of the product.

DATA IMAGES

GTx27139 WB Image

WB analysis of various samples using GTx27139 Goat Anti-Guinea Pig IgG antibody, pre-adsorbed (HRP).

Lane 1 : Protein ladder

Lane 2 : Guinea pig IgG

Lane 3 : Bovine serum

Lane 4 : Chicken serum

Lane 5 : Goat serum

Lane 6 : Hamster serum

Lane 7 : Horse serum

Lane 8 : Human serum

Lane 9 : Mouse serum

Lane 10 : Rabbit serum

Lane 11 : Rat serum

Lane 12 : Sheep serum

Lane 13 : Protein ladder

Loading : 50 ng

Dilution : 1:40000



For full product information, images and publications, please visit our [website](#).