

Dystrophin antibody [MANDYS8]

Cat. No. GTX27163

Host	Mouse
Clonality	Monoclonal
Isotype	IgG2b
Applications	WB, ICC/IF, IHC-Fr, ELISA
Reactivity	Human, Mouse, Rat, Rabbit, Chicken, Pig

References (2)

Package

100 µl

Applications

Application Note

*Optimal dilutions/concentrations should be determined by the researcher.

Suggested dilution	Recommended dilution
WB	Assay dependent
ICC/IF	Assay dependent
IHC-Fr	1:400
ELISA	Assay dependent

Not tested in other applications.

Calculated MW 427 kDa. ([Note](#))

Properties

Form	Liquid
Buffer	Ascites
Preservative	15mM Sodium azide
Storage	Store as concentrated solution. Centrifuge briefly prior to opening vial. For short-term storage (1-2 weeks), store at 4°C. For long-term storage, aliquot and store at -20°C or below. Avoid multiple freeze-thaw cycles.
Immunogen	recombinant human dystrophin fragment.
Purification	Unpurified
Conjugation	Unconjugated

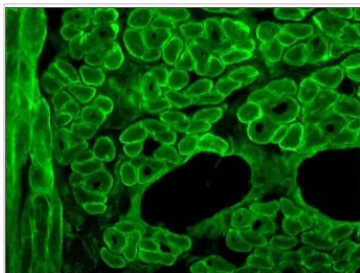
Note

For laboratory research use only. Not for any clinical, therapeutic, or diagnostic use in humans or animals. Not for animal or human consumption.

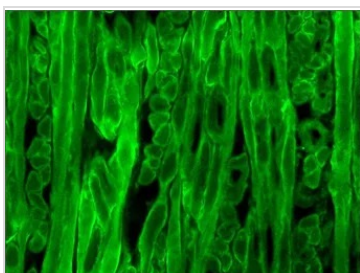
Purchasers shall not, and agree not to enable third parties to, analyze, copy, reverse engineer or otherwise attempt to determine the structure or sequence of the product.



For full product information, images and publications, please visit our [website](#).

DATA IMAGES

GTx27163 IHC-Fr Image

IHC-Fr analysis of acetone-fixed human tongue tissue using GTx27163 Dystrophin antibody [MANDYS8] at 1:400.


GTx27163 IHC-Fr Image

IHC-Fr analysis of acetone-fixed human tongue tissue using GTx27163 Dystrophin antibody [MANDYS8] at 1:400.



For full product information, images and publications, please visit our [website](#).