

Goat Anti-Rat IgG antibody, Fab fragment

Cat. No. GTX27172

Host	Goat
Clonality	Polyclonal
Isotype	IgG Fab
Applications	WB, Dot, ELISA, IHC
Reactivity	Rat

Package
1 mg

Applications

Application Note

*Optimal dilutions/concentrations should be determined by the researcher.

Suggested dilution	Recommended dilution
WB	1:2000-1:10000
Dot	Assay dependent
ELISA	1:5000-1:20000
IHC	1:1000-1:5000

Not tested in other applications.

Properties

Form	Liquid
Buffer	20mM Potassium Phosphate, 150mM NaCl
Preservative	0.01% Sodium azide
Storage	Store as concentrated solution. Centrifuge briefly prior to opening vial. Store at 4°C.
Concentration	2 mg/ml (Please refer to the vial label for the specific concentration.)
Immunogen	Rat IgG whole molecule
Purification	IgG fraction This product was prepared from monospecific antiserum by immunoaffinity chromatography using Rat IgG coupled to agarose beads followed by solid phase adsorptions to remove any unwanted reactivities, papain digestion and chromatographic separation.
Conjugation	Unconjugated

Note

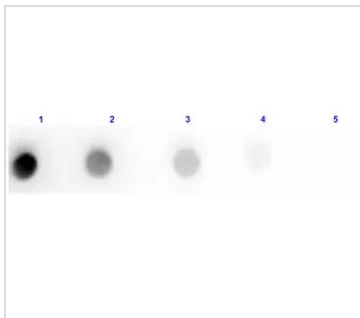
For laboratory research use only. Not for any clinical, therapeutic, or diagnostic use in humans or animals. Not for animal or human consumption.

Purchasers shall not, and agree not to enable third parties to, analyze, copy, reverse engineer or otherwise attempt to determine the structure or sequence of the product.



For full product information, images and publications, please visit our [website](#).

DATA IMAGES



GTX27172 Dot Image

Dot blot analysis of rat IgG using GTX27172 Goat Anti-Rat IgG antibody, Fab fragment.

Lane 1 : 100 ng

Lane 2 : 33.33 ng

Lane 3 : 11.11 ng

Lane 4 : 3.7 ng

Lane 5 : 1.23 ng

Dilution : 1 µg/mL



For full product information, images and publications, please visit our [website](#).