

Goat Anti-Rat IgG antibody, Fab fragment (Rhodamine)

Cat. No. GTX27174

Host	Goat
Clonality	Polyclonal
Isotype	IgG Fab
Applications	ICC/IF, Dot
Reactivity	Rat

Package
1 mg

Applications

Application Note

*Optimal dilutions/concentrations should be determined by the researcher.

Suggested dilution	Recommended dilution
ICC/IF	1:500-1:2500
Dot	Assay dependent

Not tested in other applications.

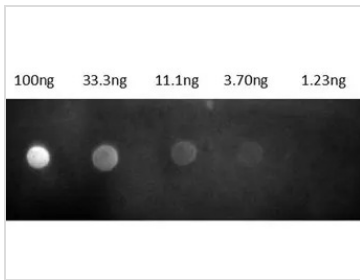
Properties

Form	Liquid
Buffer	20mM Potassium Phosphate, 150mM NaCl, 1% BSA
Preservative	0.01% Sodium azide
Storage	Store as concentrated solution. Centrifuge briefly prior to opening vial. For short-term storage (1-2 weeks), store at 4°C. For long-term storage, aliquot and store at -20°C or below. Avoid multiple freeze-thaw cycles. Protect from light.
Concentration	1 mg/ml (Please refer to the vial label for the specific concentration.)
Immunogen	Rat IgG whole molecule
Purification	IgG fraction This product was prepared from monospecific antiserum by immunoaffinity chromatography using Rat IgG coupled to agarose beads followed by solid phase adsorption(s) to remove any unwanted reactivities, papain digestion and chromatographic separation.
Conjugation	Rhodamine Wavelength
Note	For laboratory research use only. Not for any clinical, therapeutic, or diagnostic use in humans or animals. Not for animal or human consumption. Purchasers shall not, and agree not to enable third parties to, analyze, copy, reverse engineer or otherwise attempt to determine the structure or sequence of the product.



For full product information, images and publications, please visit our [website](#).

DATA IMAGES

**GTX27174 Dot Image**

Dot blot analysis of rat IgG using GTX27174 Goat Anti-Rat IgG antibody, Fab fragment (Rhodamine).

Dilution : 1 µg/mL



For full product information, images and publications, please visit our [website](#).