

CX3CR1 antibody

Cat. No. GTX27200

Host	Rabbit
Clonality	Polyclonal
Isotype	IgG
Applications	WB, IHC-P, IHC-Fr, FCM, IP, Neutralizing/Inhibition
Reactivity	Human, Rat

References (4)

Package

50 µg

Applications

Application Note

IHC-P: Use at a dilution of 1/100 - 1/500. IHC-Fr: Use at a dilution of 1/100 - 1/500. IP: Use at a dilution of 1/300 - 1/800. Neut: Use at an assay dependent dilution. WB: Use at a dilution of 1/1000 - 1/2000. Optimal dilutions/concentrations should be determined by the end user.

Calculated MW	40 kDa. (Note)
Product Note	Recombinant and natural rat CX3CR1 KO/KD validation is based on published data (PMID: 29367702).

Properties

Form	Liquid
Buffer	PBS
Preservative	0.1% Sodium azide
Storage	Store as concentrated solution. Centrifuge briefly prior to opening vial. For short-term storage (1-2 weeks), store at 4°C. For long-term storage, aliquot and store at -20°C or below. Avoid multiple freeze-thaw cycles.
Concentration	1 mg/ml (Please refer to the vial label for the specific concentration.)
Immunogen	Recombinant amino terminal fragment (Rat).
Purification	Protein A purified
Conjugation	Unconjugated

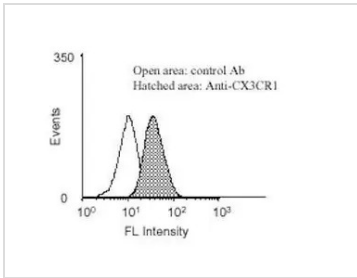
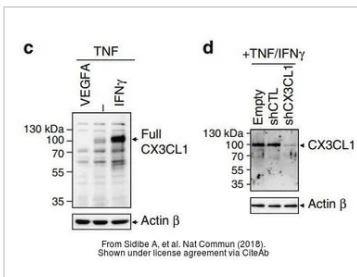
Note

For laboratory research use only. Not for any clinical, therapeutic, or diagnostic use in humans or animals. Not for animal or human consumption.

Purchasers shall not, and agree not to enable third parties to, analyze, copy, reverse engineer or otherwise attempt to determine the structure or sequence of the product.



For full product information, images and publications, please visit our [website](#).

DATA IMAGES

GTX27200 FCM Image

GTX27200 WB Image

The data was published in the journal Nat Commun in 2018. [PMID: 29367702](https://pubmed.ncbi.nlm.nih.gov/29367702/)



For full product information, images and publications, please visit our [website](https://www.genetex.com).