

MIF antibody

Cat. No. GTX27207

Host	Rabbit
Clonality	Polyclonal
Isotype	IgG
Applications	WB, IP, Neutralizing/Inhibition
Reactivity	Mouse, Rat

Package
50 µg

Applications

Application Note

For IP: Use at a dilution of 1:400 - 1:600. For WB: Use at a dilution of 1:1,500 - 1:2,500. For Neutralizing : Use at an dependent assay. Optimal dilutions/concentrations should be determined by the researcher.

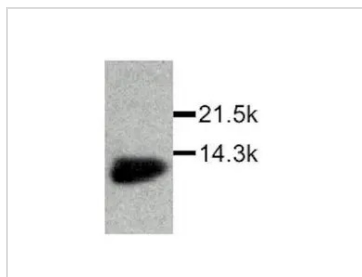
Calculated MW 12 kDa. ([Note](#))

Properties

Form	Liquid
Buffer	PBS
Preservative	0.1% Sodium azide
Storage	Store as concentrated solution. Centrifuge briefly prior to opening vial. For short-term storage (1-2 weeks), store at 4°C. For long-term storage, aliquot and store at -20°C or below. Avoid multiple freeze-thaw cycles.
Concentration	1 mg/ml (Please refer to the vial label for the specific concentration.)
Immunogen	Recombinant protein - full length rat MIF protein
Purification	Protein A affinity purified From polyclonal serum
Conjugation	Unconjugated
Note	For laboratory research use only. Not for any clinical, therapeutic, or diagnostic use in humans or animals. Not for animal or human consumption. Purchasers shall not, and agree not to enable third parties to, analyze, copy, reverse engineer or otherwise attempt to determine the structure or sequence of the product.



For full product information, images and publications, please visit our [website](#).

DATA IMAGES

GTX27207 WB Image


For full product information, images and publications, please visit our [website](https://www.genetex.com).