

# Leptin antibody

**Cat. No. GTX27210**

<b>Host</b>	Rabbit
<b>Clonality</b>	Polyclonal
<b>Isotype</b>	IgG
<b>Applications</b>	WB
<b>Reactivity</b>	Mouse

References ( 1 )

Package

50 µg

## Applications

### Application Note

For WB: Use at a dilution of 1:1,500 - 1:2,500. Optimal dilutions/concentrations should be determined by the researcher.

**Calculated MW** 19 kDa. ( [Note](#) )

## Properties

<b>Form</b>	Liquid
<b>Buffer</b>	PBS
<b>Preservative</b>	0.1% Sodium azide
<b>Storage</b>	Store as concentrated solution. Centrifuge briefly prior to opening vial. For short-term storage (1-2 weeks), store at 4°C. For long-term storage, aliquot and store at -20°C or below. Avoid multiple freeze-thaw cycles.
<b>Concentration</b>	1 mg/ml (Please refer to the vial label for the specific concentration.)
<b>Immunogen</b>	Recombinant protein - full length mouse Leptin protein
<b>Purification</b>	Protein A affinity purified From polyclonal serum
<b>Conjugation</b>	Unconjugated

### Note

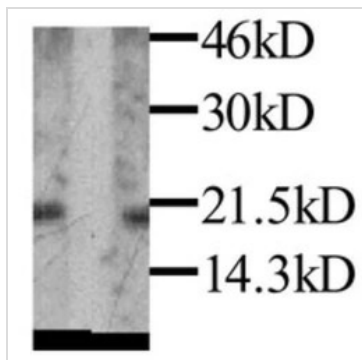
For laboratory research use only. Not for any clinical, therapeutic, or diagnostic use in humans or animals. Not for animal or human consumption.

Purchasers shall not, and agree not to enable third parties to, analyze, copy, reverse engineer or otherwise attempt to determine the structure or sequence of the product.



For full product information, images and publications, please visit our [website](#).

## DATA IMAGES



**GTX27210 WB Image**

Western Blot detection of mouse OB protein in mOB transfected 293T cells



For full product information, images and publications, please visit our [website](#).