

IL15 antibody

Cat. No. GTX27213

Host	Rabbit
Clonality	Polyclonal
Isotype	IgG
Applications	WB, Neutralizing/Inhibition
Reactivity	Mouse

Package

25 µg

Applications

Application Note

Neut: Use at an assay dependant dilution. WB: Use at a dilution of 1/500. Optimal dilutions/concentrations should be determined by the end user.

Calculated MW 19 kDa. ([Note](#))

Properties

Form	Liquid
Buffer	PBS
Preservative	0.1% Sodium azide
Storage	Store as concentrated solution. Centrifuge briefly prior to opening vial. For short-term storage (1-2 weeks), store at 4°C. For long-term storage, aliquot and store at -20°C or below. Avoid multiple freeze-thaw cycles.
Concentration	1 mg/ml (Please refer to the vial label for the specific concentration.)
Immunogen	Recombinant full length protein (Mouse). Expressed in E. coli
Purification	Protein A purified
Conjugation	Unconjugated

Note

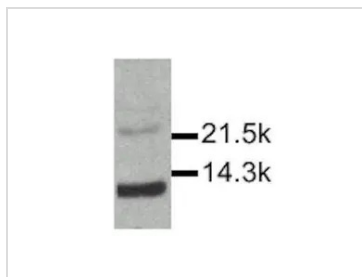
For laboratory research use only. Not for any clinical, therapeutic, or diagnostic use in humans or animals. Not for animal or human consumption.

Purchasers shall not, and agree not to enable third parties to, analyze, copy, reverse engineer or otherwise attempt to determine the structure or sequence of the product.



For full product information, images and publications, please visit our [website](#).

DATA IMAGES



GTX27213 WB Image



For full product information, images and publications, please visit our [website](#).