

# Streptavidin antibody (Biotin)

**Cat. No. GTX27241**

<b>Host</b>	Rabbit
<b>Clonality</b>	Polyclonal
<b>Isotype</b>	IgG
<b>Application</b>	WB, IHC-P, IHC-Fr, Dot, ELISA, IM
<b>Reactivity</b>	Streptomyces avidinii

**Package**  
1 mg

## APPLICATION

### Application Note

\*Optimal dilutions/concentrations should be determined by the researcher.

Suggested dilution	Recommended dilution
WB	Assay dependent
IHC-P	Assay dependent
IHC-Fr	Assay dependent
Dot	Assay dependent
ELISA	Assay dependent
IM	Assay dependent

Not tested in other applications.

**Product Note** No cross reactivity occurs against Avidin.

## PROPERTIES

<b>Form</b>	Liquid
<b>Buffer</b>	20mM Potassium Phosphate, 150mM NaCl, 1% BSA
<b>Preservative</b>	0.01% Sodium azide
<b>Storage</b>	Store as concentrated solution. Centrifuge briefly prior to opening vial. For short-term storage (1-2 weeks), store at 4°C. For long-term storage, aliquot and store at -20°C or below. Avoid multiple freeze-thaw cycles.
<b>Concentration</b>	10 mg/ml (Please refer to the vial label for the specific concentration.)
<b>Immunogen</b>	Streptavidin [ Streptomyces avidinii ]
<b>Purification</b>	IgG fraction From polyclonal serum
<b>Conjugation</b>	Biotin Ratio : 10-20 Biotinamidocaproate N-Hydroxysuccinimide Ester (BAC) molecules per Rabbit IgG molecule.



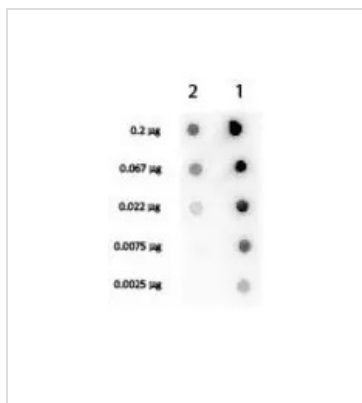
For full product information, images and publications, please visit our [website](#).

For laboratory research use only. Not for any clinical, therapeutic, or diagnostic use in humans or animals. Not for animal or human consumption.

## Note

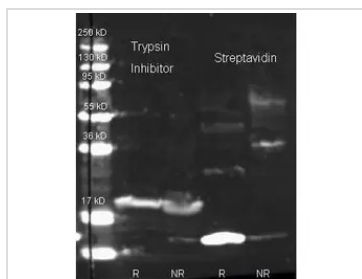
Purchasers shall not, and agree not to enable third parties to, analyze, copy, reverse engineer or otherwise attempt to determine the structure or sequence of the product.

## DATA IMAGES



### GTX27241 Dot Image

Dot Blot of Rabbit anti-Streptavidin Biotin Conjugated (GTX27241). Antigen: Lane 1 - Biotin conjugated Streptavidin Antibody. Lane 2 - Streptavidin Antibody. Load: 3-fold serial dilution starting at 200 ng. Secondary antibody: HRP Streptavidin at 1:40,000 for 60 min at RT. Block: 1% BSA-TTBS 30 min at RT.



### GTX27241 WB Image

Western Blot of Rabbit Anti-Trypsin Inhibitor Antibody and Rabbit Anti-Streptavidin Antibody (GTX27241). Lane 1: Trypsin Inhibitor reduced. Lane 2: Trypsin Inhibitor non-reduced. Lane 3: Streptavidin reduced. Lane 4: Streptavidin non-reduced. Load: ~1ug per lane. Primary antibody: Primary antibody at 1:1000 for overnight at 4°C. Secondary antibody: Dylight 649 conjugated Donkey anti rabbit secondary antibody at 1:10,000 for 45 min at RT. Block overnight at 4°C. Predicted/Observed size: 18.8 kDa, ~15 kDa for Streptavidin, 24 kDa, ~20 kDa for Trypsin Inhibitor. Other band(s): none.



For full product information, images and publications, please visit our [website](#).