

Streptavidin antibody (Biotin)

Cat. No. GTX27241

Host	Rabbit
Clonality	Polyclonal
Isotype	IgG
Applications	WB, IHC-P, IHC-Fr, Dot, ELISA, IM
Reactivity	Streptomyces avidinii

Package
1 mg

Applications

Application Note

*Optimal dilutions/concentrations should be determined by the researcher.

Suggested dilution	Recommended dilution
WB	Assay dependent
IHC-P	Assay dependent
IHC-Fr	Assay dependent
Dot	Assay dependent
ELISA	Assay dependent
IM	Assay dependent

Not tested in other applications.

Product Note No cross reactivity occurs against Avidin.

Properties

Form	Liquid
Buffer	20mM Potassium Phosphate, 150mM NaCl, 1% BSA
Preservative	0.01% Sodium azide
Storage	Store as concentrated solution. Centrifuge briefly prior to opening vial. For short-term storage (1-2 weeks), store at 4°C. For long-term storage, aliquot and store at -20°C or below. Avoid multiple freeze-thaw cycles.
Concentration	10 mg/ml (Please refer to the vial label for the specific concentration.)
Immunogen	Streptavidin [Streptomyces avidinii]
Purification	IgG fraction From polyclonal serum
Conjugation	Biotin Ratio : 10-20 Biotinamidocaproate N-Hydroxysuccinimide Ester (BAC) molecules per Rabbit IgG molecule.



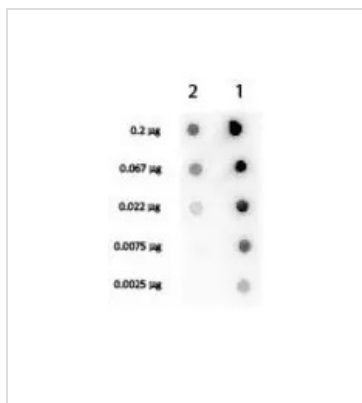
For full product information, images and publications, please visit our [website](#).

For laboratory research use only. Not for any clinical, therapeutic, or diagnostic use in humans or animals. Not for animal or human consumption.

Note

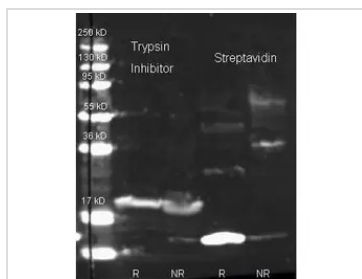
Purchasers shall not, and agree not to enable third parties to, analyze, copy, reverse engineer or otherwise attempt to determine the structure or sequence of the product.

DATA IMAGES



GTX27241 Dot Image

Dot Blot of Rabbit anti-Streptavidin Biotin Conjugated (GTX27241). Antigen: Lane 1 - Biotin conjugated Streptavidin Antibody. Lane 2 - Streptavidin Antibody. Load: 3-fold serial dilution starting at 200 ng. Secondary antibody: HRP Streptavidin at 1:40,000 for 60 min at RT. Block: 1% BSA-TTBS 30 min at RT.



GTX27241 WB Image

Western Blot of Rabbit Anti-Trypsin Inhibitor Antibody and Rabbit Anti-Streptavidin Antibody (GTX27241). Lane 1: Trypsin Inhibitor reduced. Lane 2: Trypsin Inhibitor non-reduced. Lane 3: Streptavidin reduced. Lane 4: Streptavidin non-reduced. Load: ~1ug per lane. Primary antibody: Primary antibody at 1:1000 for overnight at 4°C. Secondary antibody: Dylight 649 conjugated Donkey anti rabbit secondary antibody at 1:10,000 for 45 min at RT. Block overnight at 4°C. Predicted/Observed size: 18.8 kDa, ~15 kDa for Streptavidin, 24 kDa, ~20 kDa for Trypsin Inhibitor. Other band(s): none.



For full product information, images and publications, please visit our [website](https://www.genetex.com).