

Cyanine antibody (AP)

Cat. No. GTX27242

| | |
|---------------------|---------------------|
| Host | Sheep |
| Clonality | Polyclonal |
| Isotype | IgG |
| Applications | WB, Dot, ELISA, IHC |
| Reactivity | Species independent |

Package
100 µg

Applications

Application Note

*Optimal dilutions/concentrations should be determined by the researcher.

| Suggested dilution | Recommended dilution |
|--------------------|----------------------|
| WB | 1:500-1:2500 |
| Dot | Assay dependent |
| ELISA | 1:2000-1:10000 |
| IHC | 1:200-1:1000 |

Not tested in other applications.

Product Note Reactivity was observed against Cy2, Cy3 and Cy5. Reactivity against other cyanine analogs is unknown.

Properties

| | |
|----------------------|--|
| Form | Liquid |
| Buffer | 50mM Tris-HCl, 150mM NaCl, 1mM MgCl ₂ , 0.1mM ZnCl ₂ , 1% BSA, 50% Glycerol |
| Preservative | 0.01% Sodium azide |
| Storage | Store as concentrated solution. Centrifuge briefly prior to opening vial. Store at 4°C. DO NOT FREEZE. |
| Concentration | 1 mg/ml (Please refer to the vial label for the specific concentration.) |
| Immunogen | A mixture of Cy3 and Cy5 conjugated KLH |
| Purification | Purified by antigen-affinity chromatography. From serum |
| Conjugation | Alkaline Phosphatase (AP) |

Note

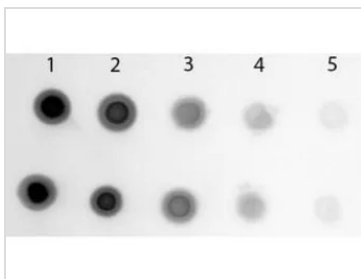
For laboratory research use only. Not for any clinical, therapeutic, or diagnostic use in humans or animals. Not for animal or human consumption.

Purchasers shall not, and agree not to enable third parties to, analyze, copy, reverse engineer or otherwise attempt to determine the structure or sequence of the product.



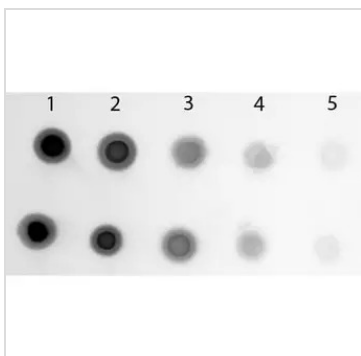
For full product information, images and publications, please visit our [website](#).

DATA IMAGES



GTX27242 WB Image

Dot Blot of Sheep anti-Cyanine Antibody Alkaline Phosphatase Conjugated. Antigen: Row 1 - Cy3 Streptavidin Conjugated Row 2 - Cy5 Streptavidin Conjugated. Load: Lane 1 - 200 ng Lane 2 - 66.67 ng Lane 3 - 22.22 ng Lane 4 - 7.41 ng Lane 5 - 2.47 ng. Primary antibody: none. Secondary antibody: Sheep anti-Cyanine Antibody Alkaline Phosphatase Conjugated at 1:1,000 for 60 min at RT.



GTX27242 Dot Image

Dot blot analysis of Cy3-conjugated (row 1) and Cy5-conjugated (row 2) streptavidin using GTX27242 Cyanine antibody (AP).

Lane 1 : 200 ng
 Lane 2 : 66.67 ng
 Lane 3 : 22.22 ng
 Lane 4 : 7.41 ng
 Lane 5 : 2.47 ng
 Dilution : 1:1000



For full product information, images and publications, please visit our [website](#).