

Protein G antibody (FITC)

Cat. No. GTX27249

Host	Rabbit
Clonality	Polyclonal
Isotype	IgG
Application	WB, ICC/IF, IHC-Fr, FACS, Dot, ELISA
Reactivity	Staphylococcus aureus

Reference (1)

Package

1 mg

APPLICATION

Application Note

*Optimal dilutions/concentrations should be determined by the researcher.

Suggested dilution	Recommended dilution
WB	Assay dependent
ICC/IF	1:500-1:2500
IHC-Fr	Assay dependent
FACS	Assay dependent
Dot	Assay dependent
ELISA	Assay dependent

Not tested in other applications.

PROPERTIES

Form	Liquid
Buffer	20mM Potassium Phosphate, 150mM NaCl, 1% BSA
Preservative	0.01% Thimerosal
Storage	Store as concentrated solution. Centrifuge briefly prior to opening vial. For short-term storage (1-2 weeks), store at 4°C. For long-term storage, aliquot and store at -20°C or below. Avoid multiple freeze-thaw cycles. Protect from light.
Concentration	10 mg/ml (Please refer to the vial label for the specific concentration.)
Immunogen	Protein G collected from Streptococcus sp
Purification	IgG fraction This product is an IgG fraction antibody purified from monospecific antiserum by a multi-step process which includes delipidation, salt fractionation and ion exchange chromatography followed by extensive dialysis against the buffer stated above.
Conjugation	Fluorescein isothiocyanate (FITC) Ratio : 4.5 molecules FITC per Rabbit IgG molecule.

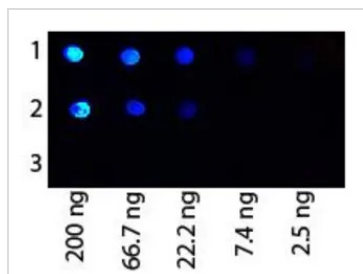


For full product information, images and publications, please visit our [website](#).

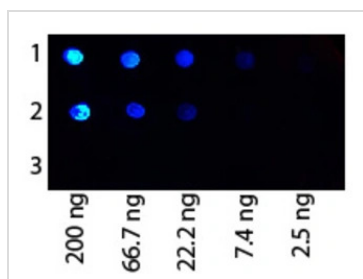
For laboratory research use only. Not for any clinical, therapeutic, or diagnostic use in humans or animals. Not for animal or human consumption.

Note

Purchasers shall not, and agree not to enable third parties to, analyze, copy, reverse engineer or otherwise attempt to determine the structure or sequence of the product.

DATA IMAGES

GTX27249 Dot Image

Dot Blot of Protein G Antibody Fluorescein Conjugated (GTX27249). Antigen 1: Human IgG. Antigen 2: Rat IgG. Antigen 3: Dog IgG. Load: Starting dot is 200 ng followed by a 3-fold serial dilution. Primary antibody: Protein G at 1:1000 for 60 min RT. Secondary antibody: Fluorescein rabbit anti-Protein G at 1:1,000 for 30 min at RT. Block: blocking buffer for 30 min at RT.


GTX27249 Dot Image

Dot blot analysis of various samples using GTX27249 Protein G antibody (FITC).

Row 1 : Human IgG

Row 2 : Rat IgG

Row 3 : Dog IgG

Dilution : 1:1000



For full product information, images and publications, please visit our [website](https://www.genetex.com).