

Protein G antibody (Biotin)

Cat. No. GTX27251

Host	Rabbit
Clonality	Polyclonal
Isotype	IgG
Applications	Dot, ELISA
Reactivity	Staphylococcus aureus

Package
1 mg

Applications

Application Note

*Optimal dilutions/concentrations should be determined by the researcher.

Suggested dilution	Recommended dilution
Dot	Assay dependent
ELISA	1:90000-1:350000

Not tested in other applications.

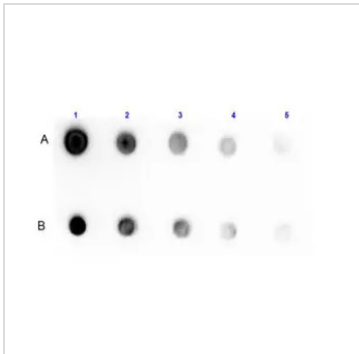
Properties

Form	Liquid
Buffer	20mM Potassium Phosphate, 150mM NaCl, 1% BSA
Preservative	0.01% Sodium azide
Storage	Store as concentrated solution. Centrifuge briefly prior to opening vial. For short-term storage (1-2 weeks), store at 4°C. For long-term storage, aliquot and store at -20°C or below. Avoid multiple freeze-thaw cycles.
Concentration	10 mg/ml (Please refer to the vial label for the specific concentration.)
Immunogen	Protein G collected from Streptococcus sp
Purification	IgG fraction This product is an IgG fraction antibody purified from monospecific antiserum by a multi-step process which includes delipidation, salt fractionation and ion exchange chromatography followed by extensive dialysis against the buffer stated above.
Conjugation	Biotin
Note	For laboratory research use only. Not for any clinical, therapeutic, or diagnostic use in humans or animals. Not for animal or human consumption. Purchasers shall not, and agree not to enable third parties to, analyze, copy, reverse engineer or otherwise attempt to determine the structure or sequence of the product.



For full product information, images and publications, please visit our [website](#).

DATA IMAGES

**GTX27251 Dot Image**

Dot blot analysis of protein G with (row B) or without (row A) TCEP reduction using GTX27251 Protein G antibody (Biotin).

Lane 1 : 100 ng

Lane 2 : 33.33 ng

Lane 3 : 11.11 ng

Lane 4 : 3.7 ng

Lane 5 : 1.23 ng

Dilution : 1 μ g/mL



For full product information, images and publications, please visit our [website](#).